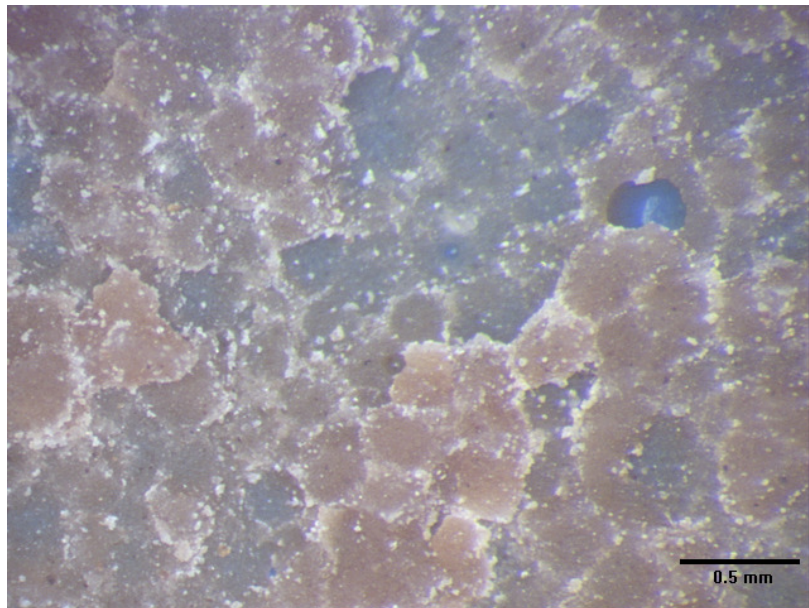
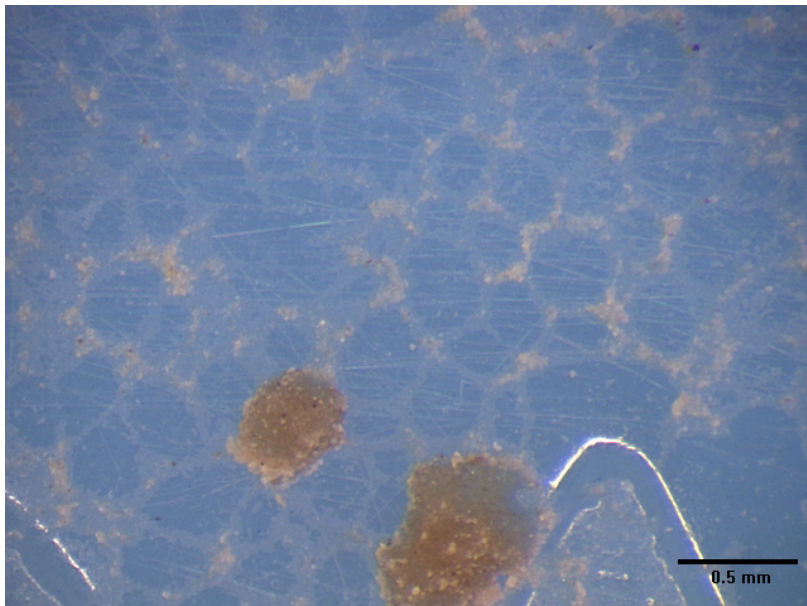
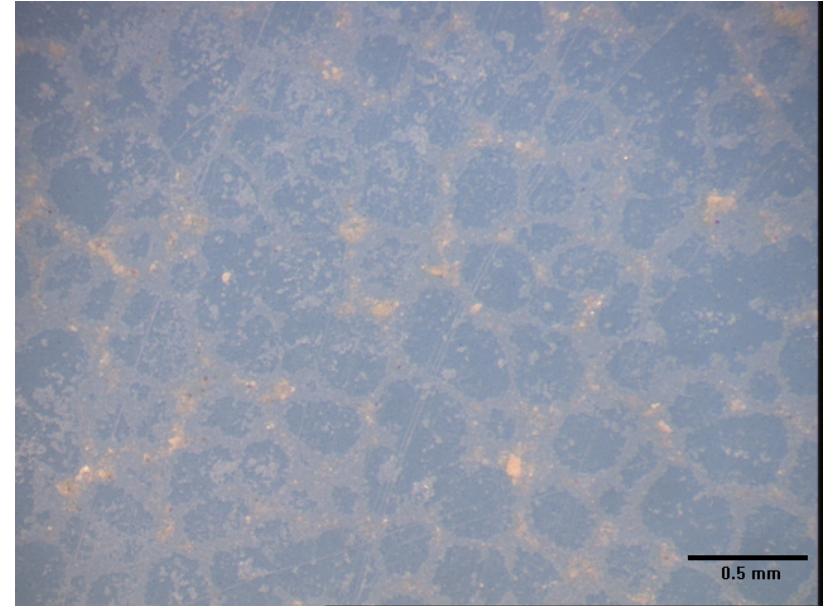
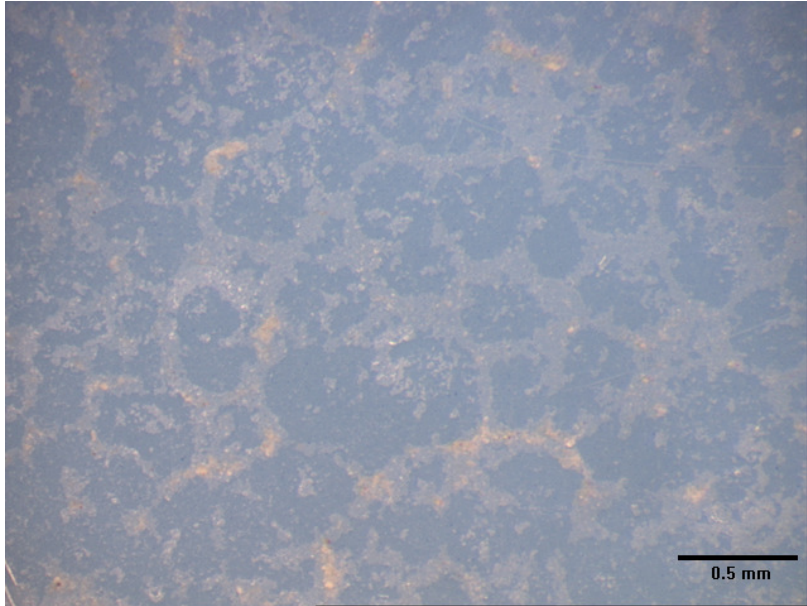
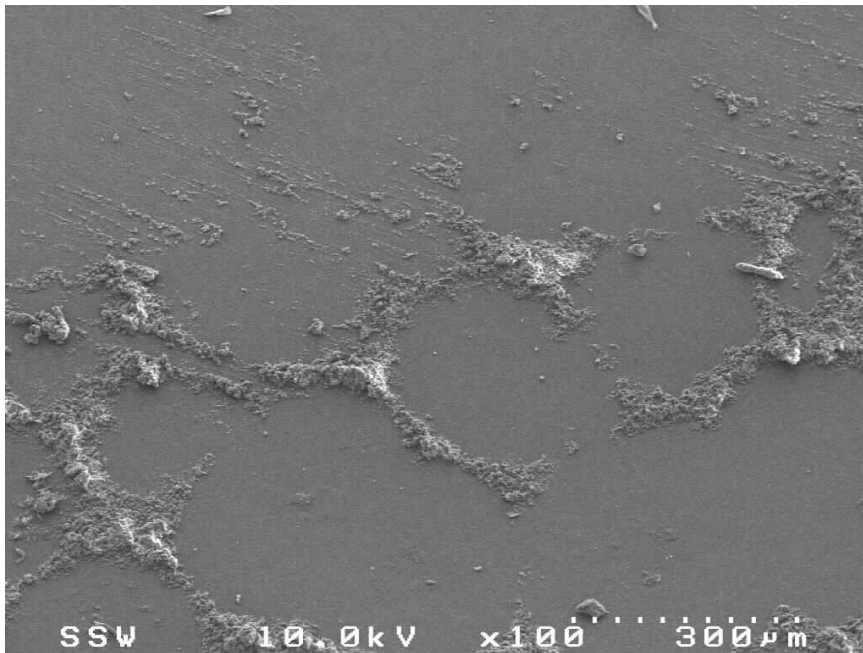
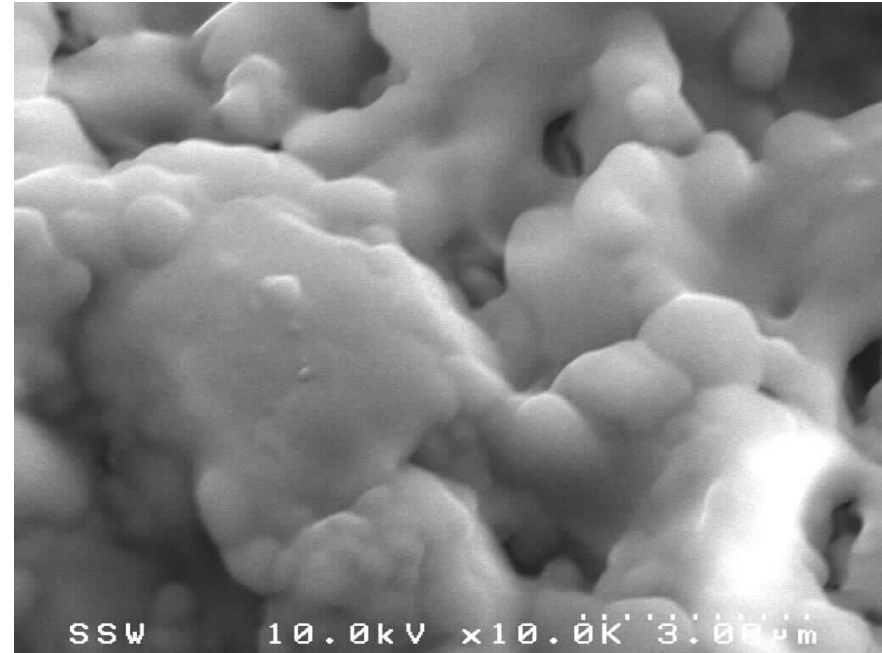
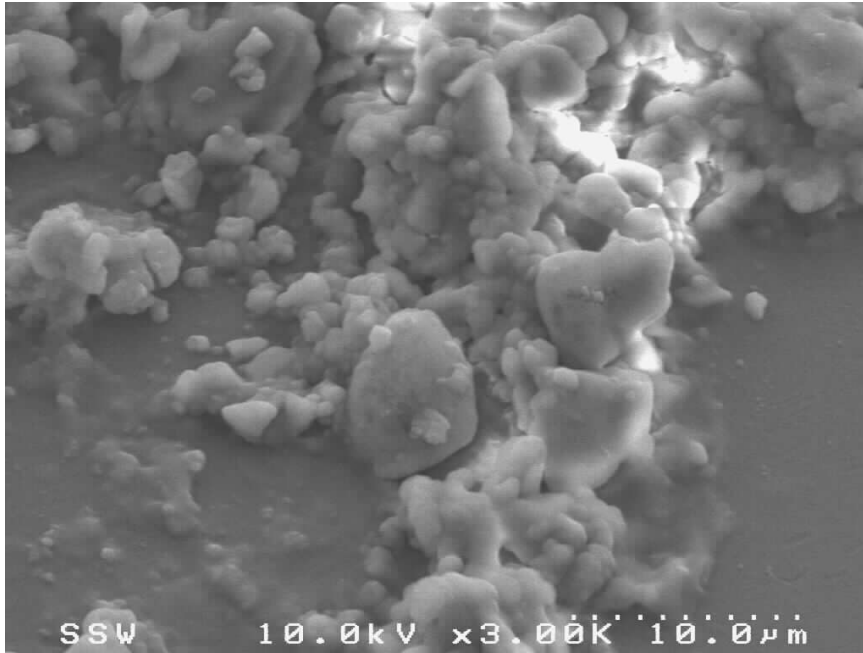


**Figure 1:** Optical images of the chocolate left in the moulds. Please note the granular nature of the chocolate and the segregation of one or more of the components to the boundary interface.

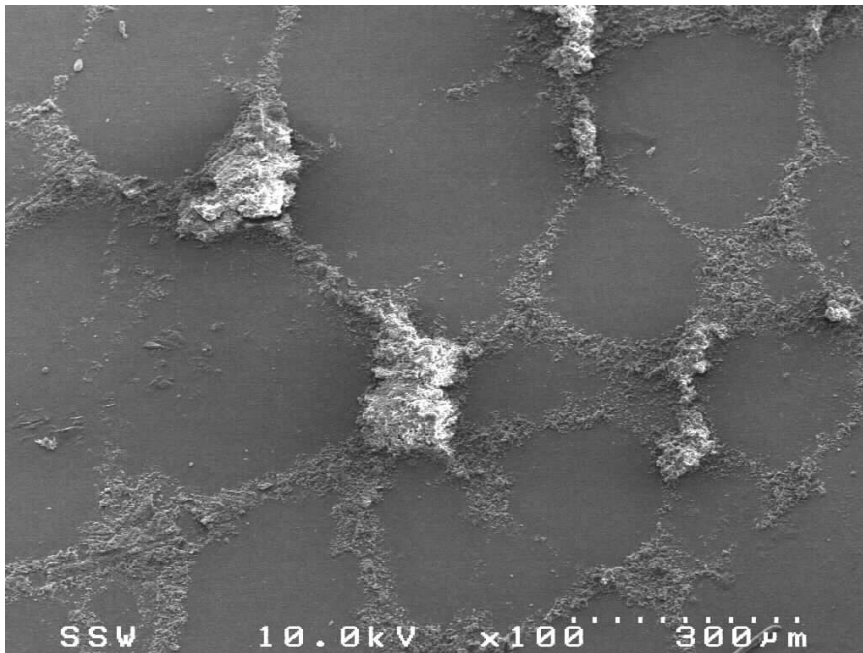
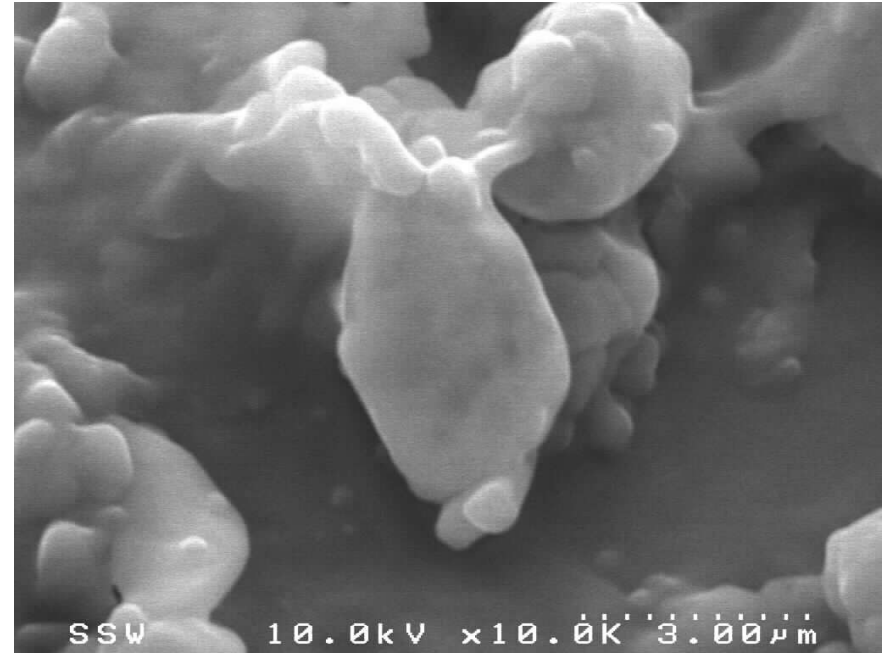
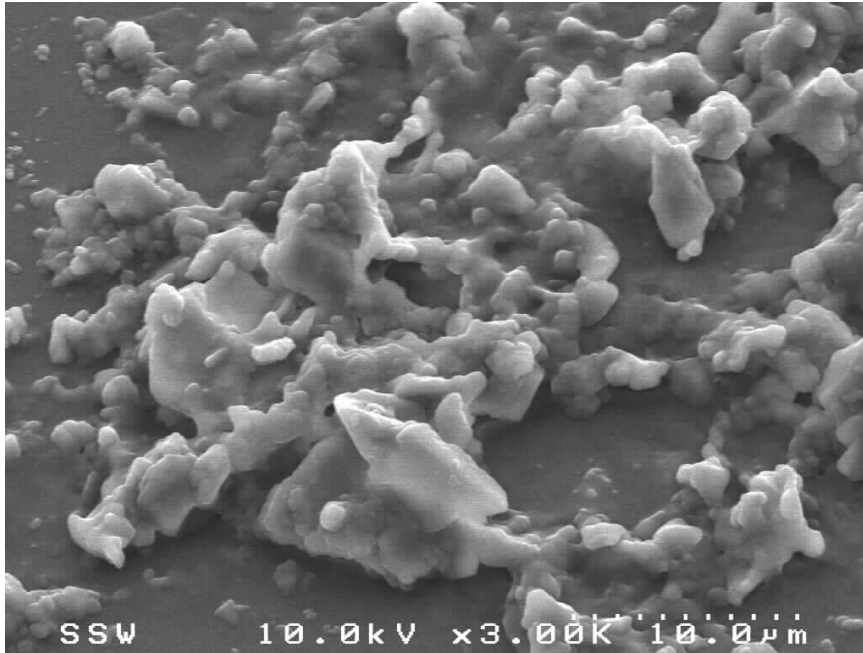




**Figure 2:** Optical images of the residue left in the moulds. Please note that the pattern of the residue left in the mould is similar to the pattern of the grains in the chocolate. It appears that the components which had migrated to the grain boundaries in the chocolate are also depositing on the mould, forming the bulk of the residue.

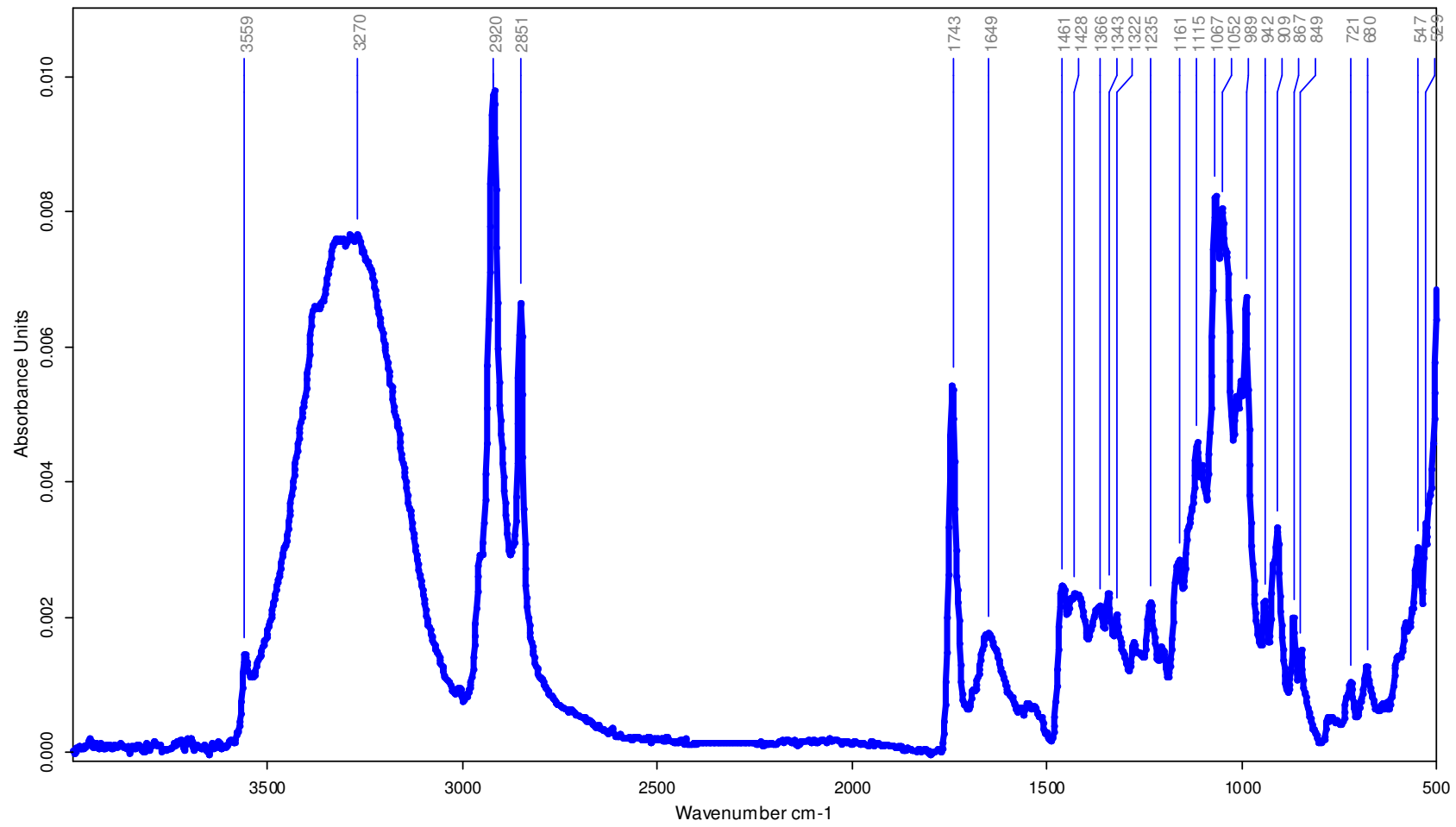


**Figure 3: SEM micrographs of the residue on the mould surfaces. Note the pattern similar to that seen in the optical micrographs.**



**Figure 4:** SEM micrographs of the residue on the mould surfaces. Note the pattern similar to that seen in the optical micrographs.

# Surface Science Western



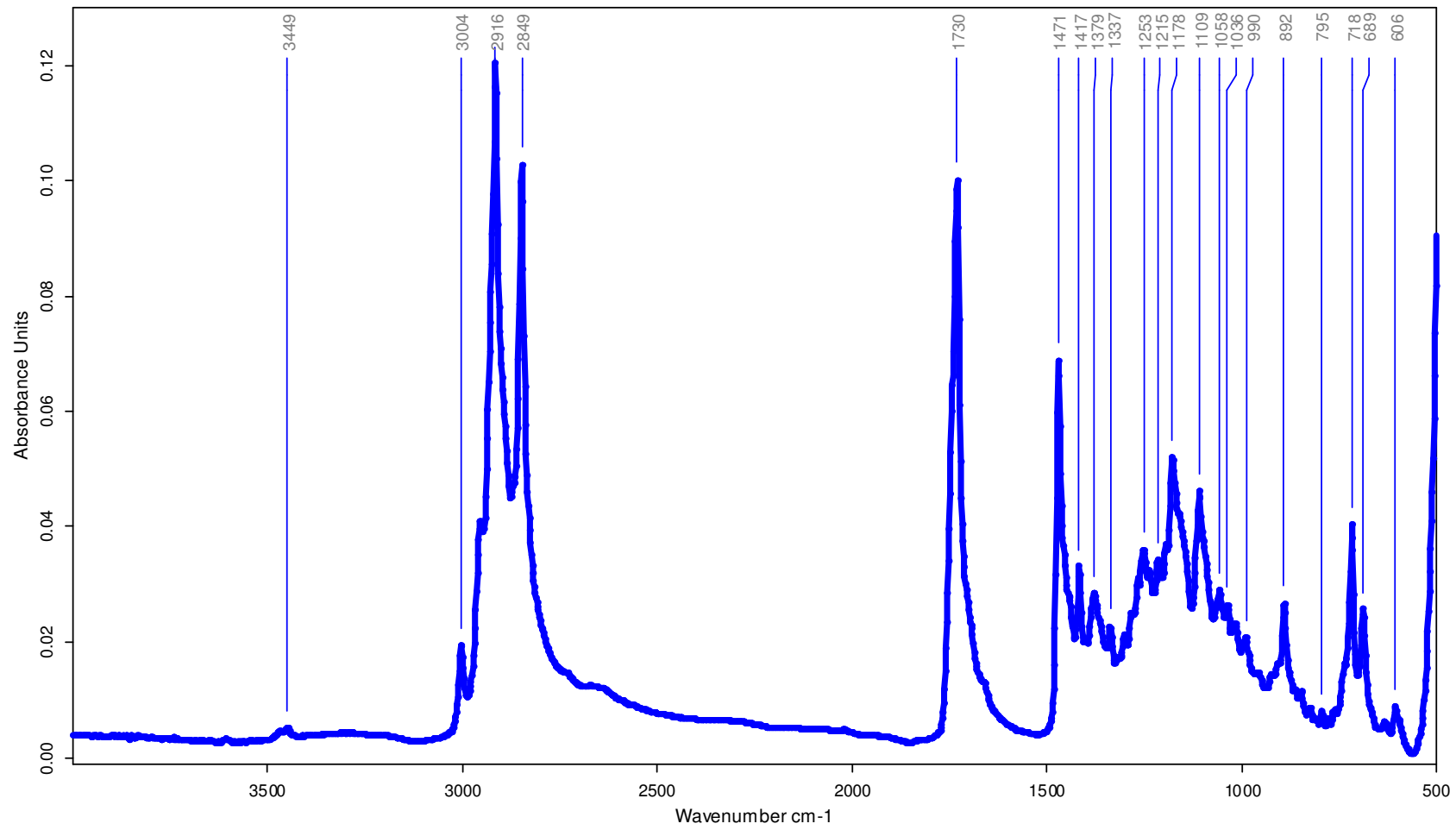
Filename: RESIDUE4.101  
Date : 2004/07/30  
Resolution : 4, # of scans : 32

MIRANDA, RESIDUE FROM MOULDS

Technique : MAIN BOX  
Experiment : MCTMIRMJW.XPM  
User : Default

Figure 5

# Surface Science Western



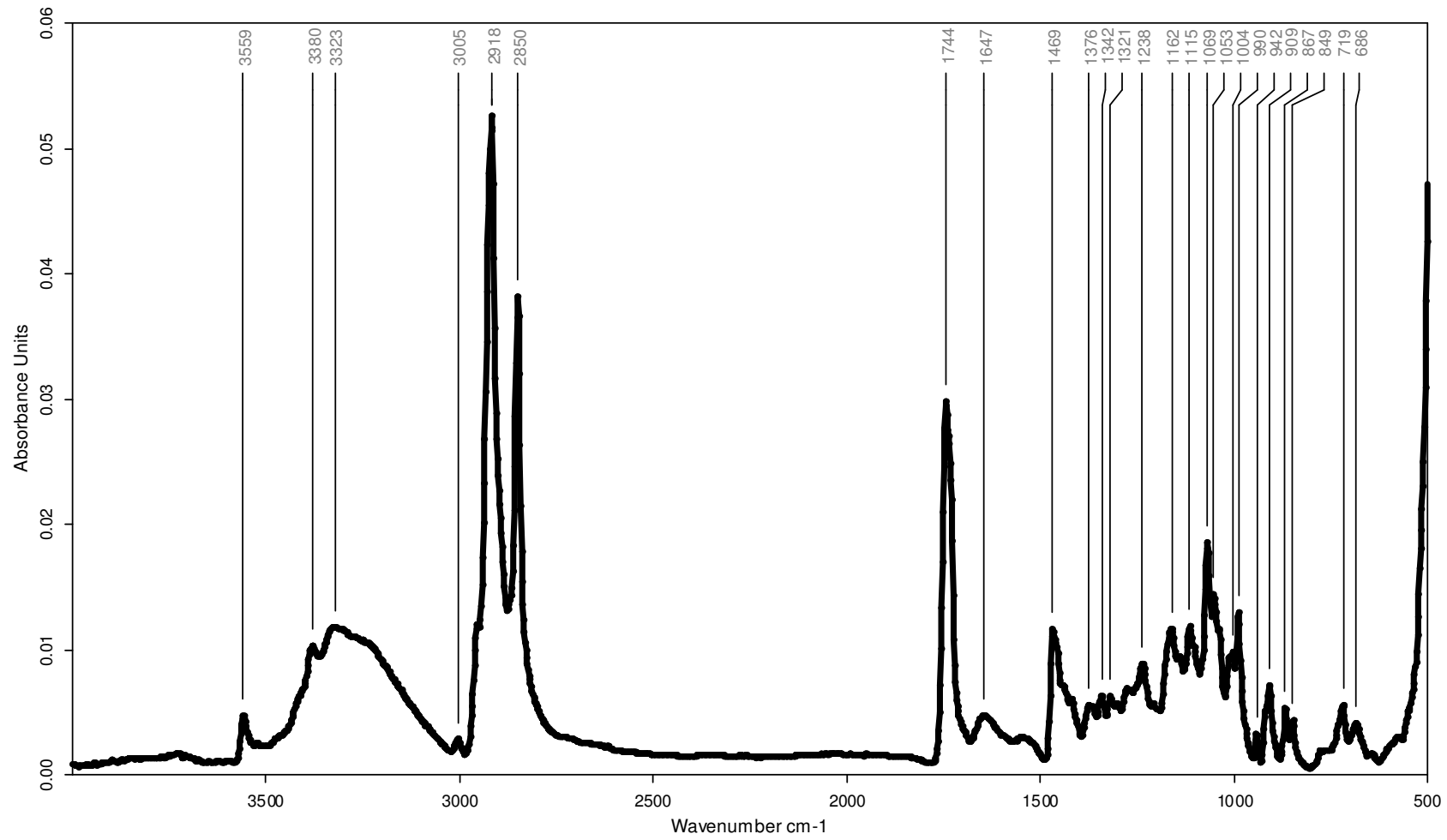
Filename: COCOA-BUTTER0.100  
Date : 2004/07/30  
Resolution : 4, # of scans : 32

MIRANDA, REFERENCE COCOA BUTTER

Technique : MAIN BOX  
Experiment : MCTMIRMJW.XPM  
User : Default

Figure 6

# Surface Science Western



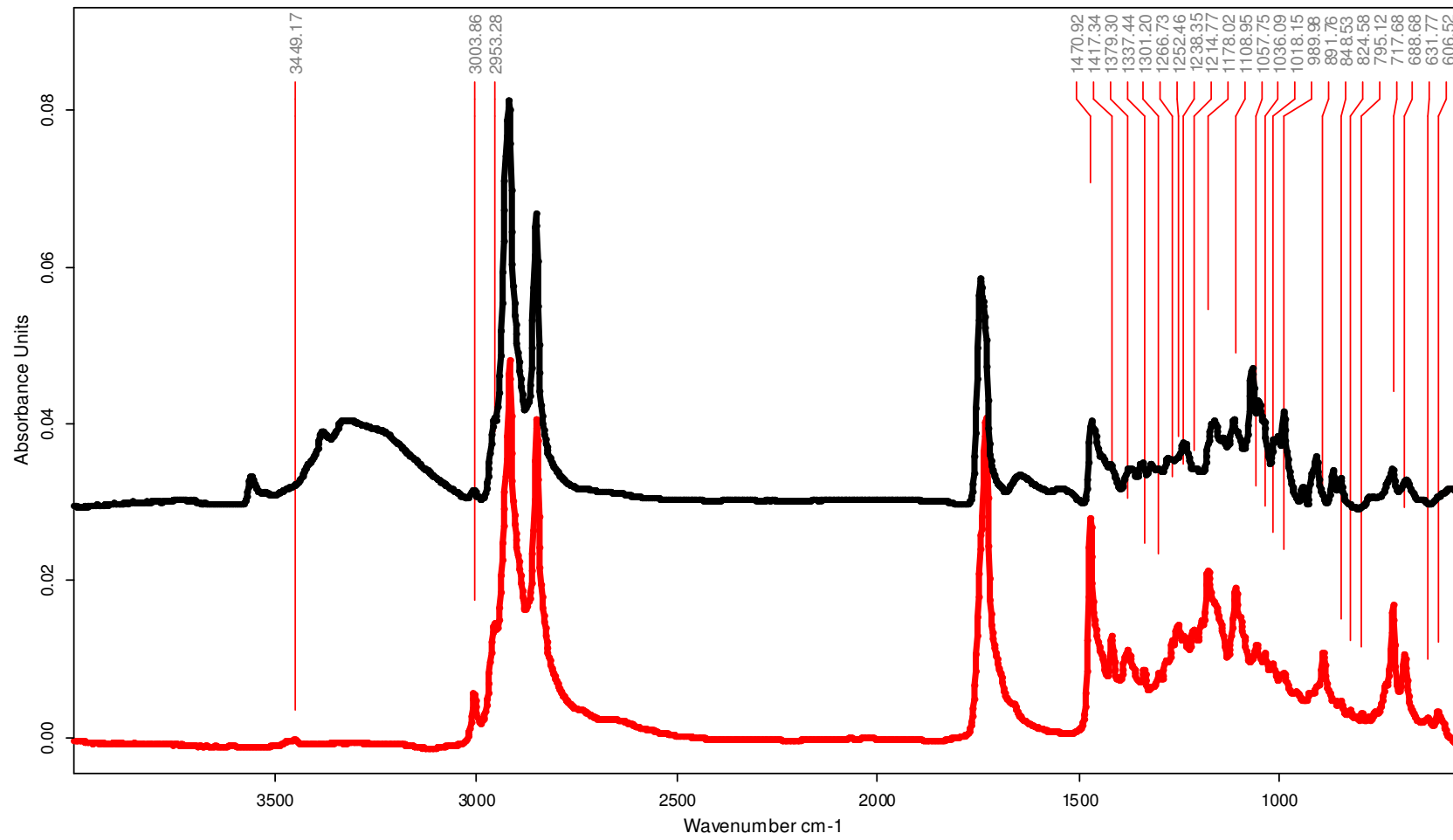
Filename: CHOCOLATE10.100  
Date : 2004/07/30  
Resolution : 4, # of scans : 32

MIRANDA, CHOCOLATE

Technique : MAIN BOX  
Experiment : MCTMIRMJW.XPM  
User : Default

Figure 7

# Surface Science Western



MIRANDA, CHOCOLATE

MIRANDA, REFERENCE COCOA BUTTER

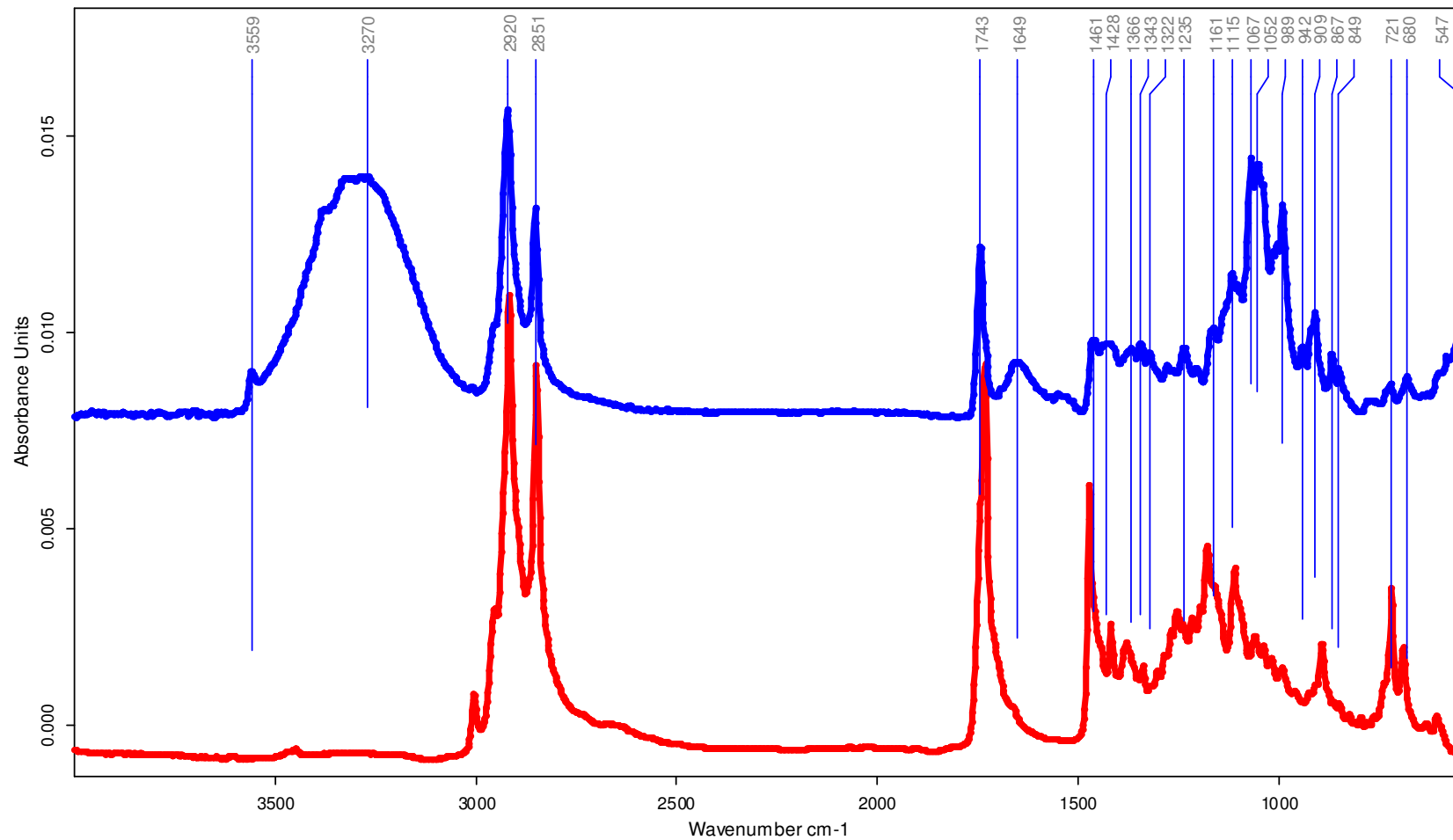
Filename: CHOCOLATE10.100  
Date : 2004/07/30  
Resolution : 4, # of scans : 32

Technique : MAIN BOX  
Experiment : MCTMIRMJW.XPM  
User : Default

Figure 8



# Surface Science Western



MIRANDA, RESIDUE FROM MOULDS

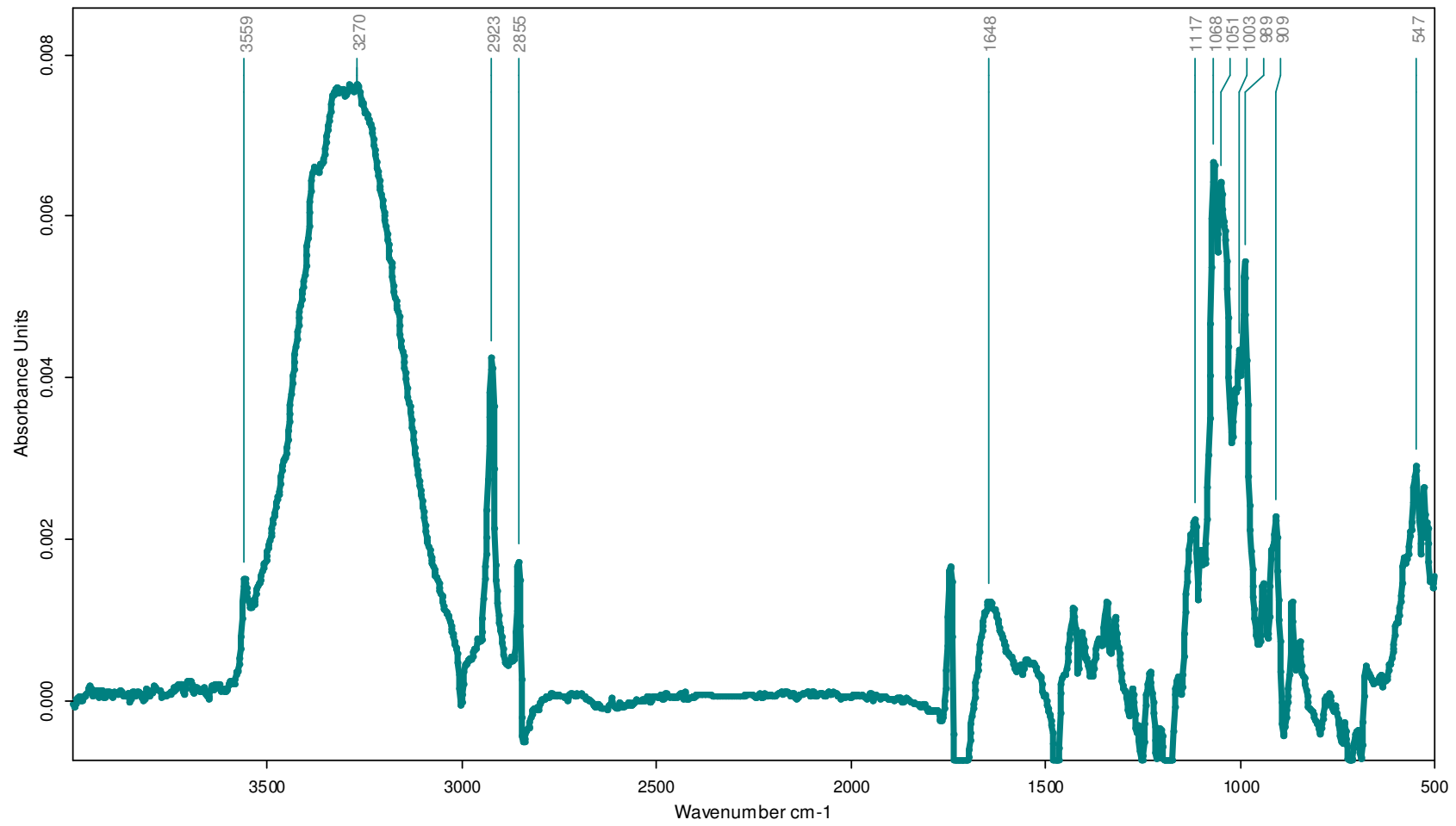
MIRANDA, REFERENCE COCOA BUTTER

Filename: RESIDUE4.101  
Date : 2004/07/30  
Resolution : 4, # of scans : 32

Technique : MAIN BOX  
Experiment : MCTMIRMJW.XPM  
User : Default

Figure 9

# Surface Science Western



Filename: RESIDUEMINUSCOCOABUTTER.99

Date : 2004/07/30

Resolution : 4, # of scans : 32

RESIDUE FROM MOULD MINUS COCOA BUTTER

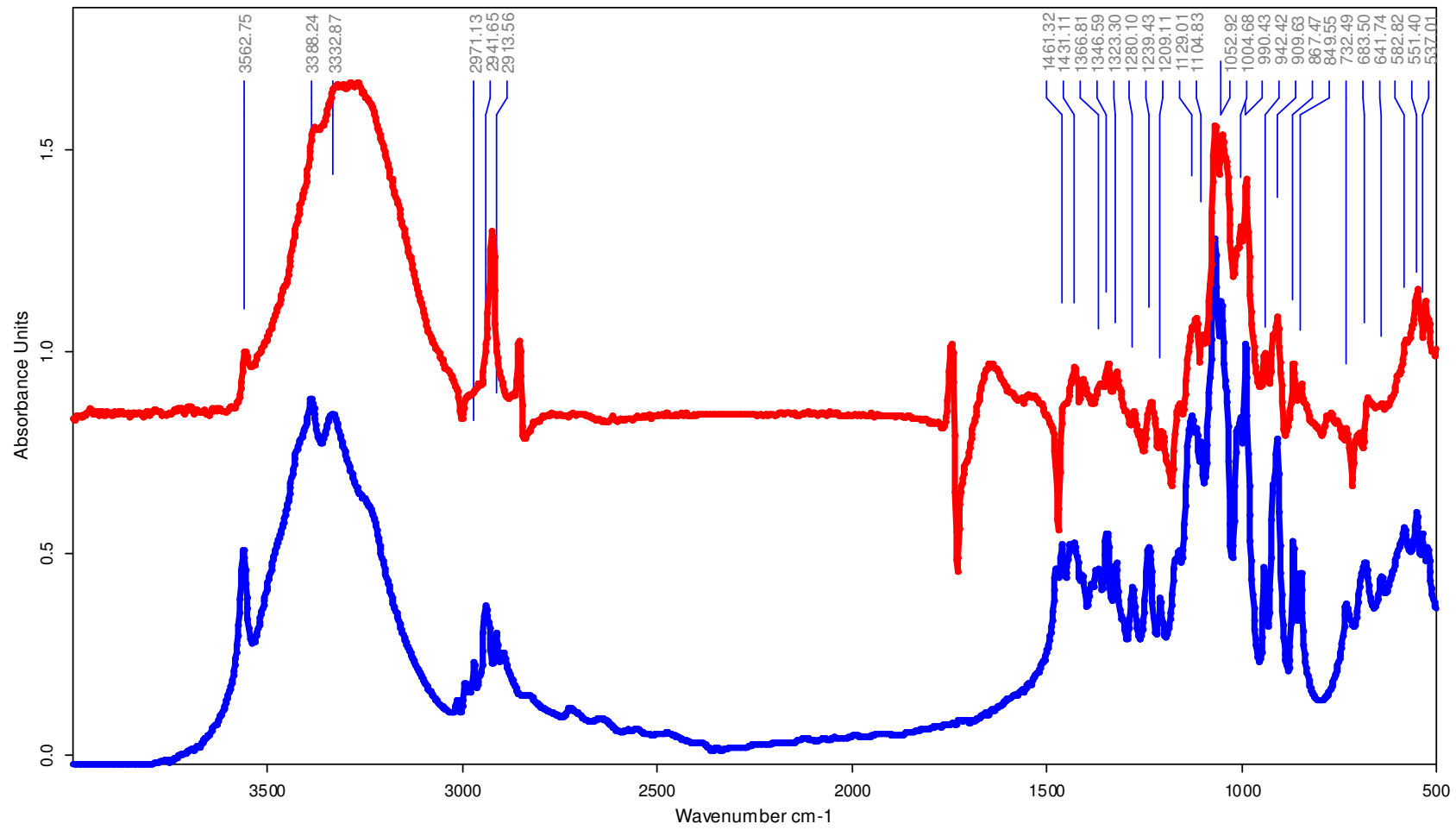
Technique : KBr MAIN BOX

Experiment : MCTMIRMJW.XPM

User : Default

Figure 10

# Surface Science Western



RESIDUE FROM MOULD MINUS COCOA BUTTER

SUCROSE

Filename: RESIDUEMINUSCOCOABUTTER.99

Date : 2004/07/30

Resolution : 4, # of scans : 32

Technique : KBr MAIN BOX

Experiment : MCTMIRMJW.XPM

User : Default

Figure 11