

Safety

To contact Western Police

- On any campus telephone, ext. 83300.
- On a cell phone, 519-661-3300.
- 911 (inform operator you're on Western's Campus)

Medical emergency

- Call 911 (inform operator you're on Western's Campus) in an emergency. Ensure Western Police are notified afterwards at 519-661-3300 / x83300 to direct a response.
- Get immediate assistance.
- Notify Campus Response Team, located by Pit Admin. They are in blue shirts and vests and carry first aid supplies.
- If an ambulance or Police are required:
 - Call 911/ Western Police at ext. 83300 or 519-661-3300.
 - Identify yourself.
 - Identify your location.
 - Report the medical situation:
 - Reason for call.
 - Condition of victim.
 - Known hazards.
 - Assist the victim.

Missing persons or other emergencies

Go to the Pit Admin by Team Pit area. They will coordinate a response with Western Police and the event staff.

Fire alarms

- Evacuate through emergency doors or the closest exit.
- Meet at North side of building.
- Evacuate for all alarms.

Evacuation

- Shut down equipment and secure hazards.
- Calmly proceed to nearest exit.
- Follow instructions from personnel.
- Walk, don't rush or crowd.
- Move away from building quickly.
- Meet at North side of building.
- Do not re-enter the building until notified by facilities staff.

Lockdown procedures

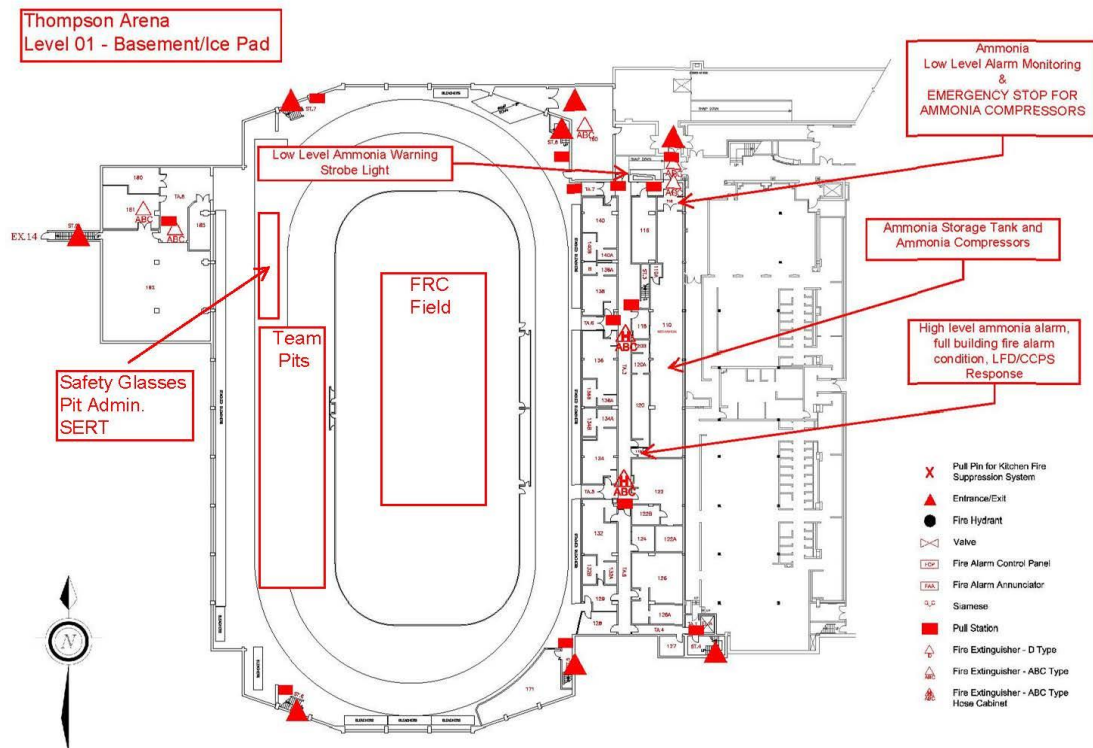
- Lockdowns are coordinated by Western Police.
- Move to the nearest room you feel is safe. Lock and barricade the door, and turn off the lights. Cover windows with blinds, curtains, etc. Keep away from windows and lie flat on the floor.
- Turn off cell phones, except to report injured people. Report injured people to Western Police at 519-661-3300 /83300 or dial 911.
- Stay in the room until the police arrive.
- Do not exit the building for a fire alarm during a lockdown. It may be a ploy by an intruder.

Safety glasses

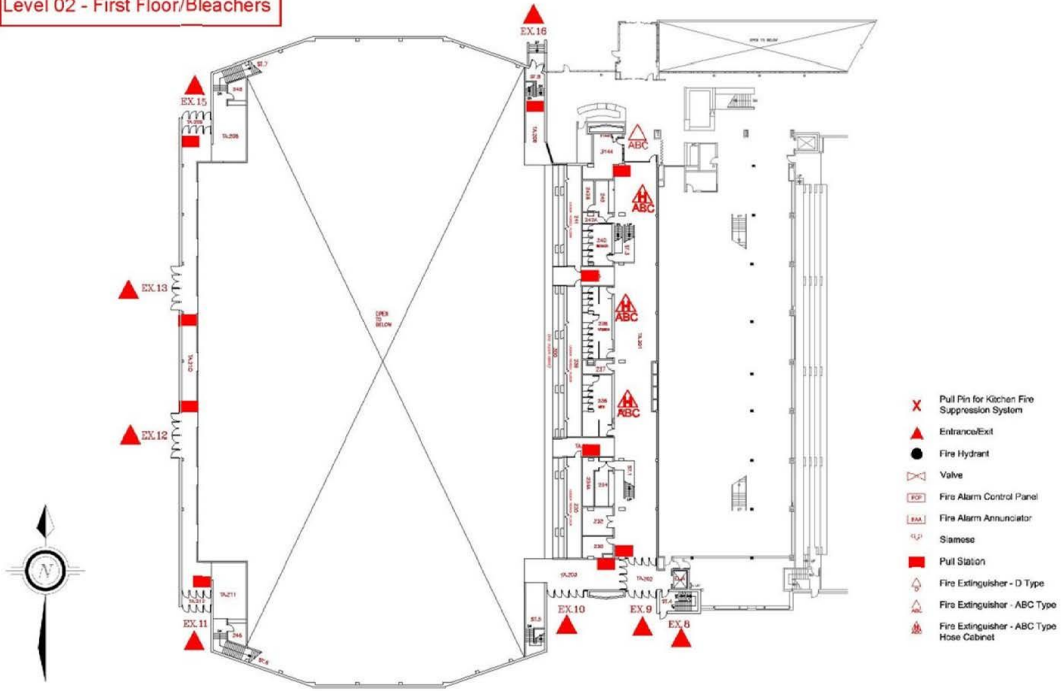
Safety glasses are required in the pit area. Visitors can sign-out safety glasses from the safety glasses attendants located adjacent to the pits.

Emergency Map

- Exits are marked with red triangles, on attached map.
- A defibrillator and first aid kit are located at with our campus response team.
- For general emergencies or lost persons, go to the Pit Admin near Team Pit Area.

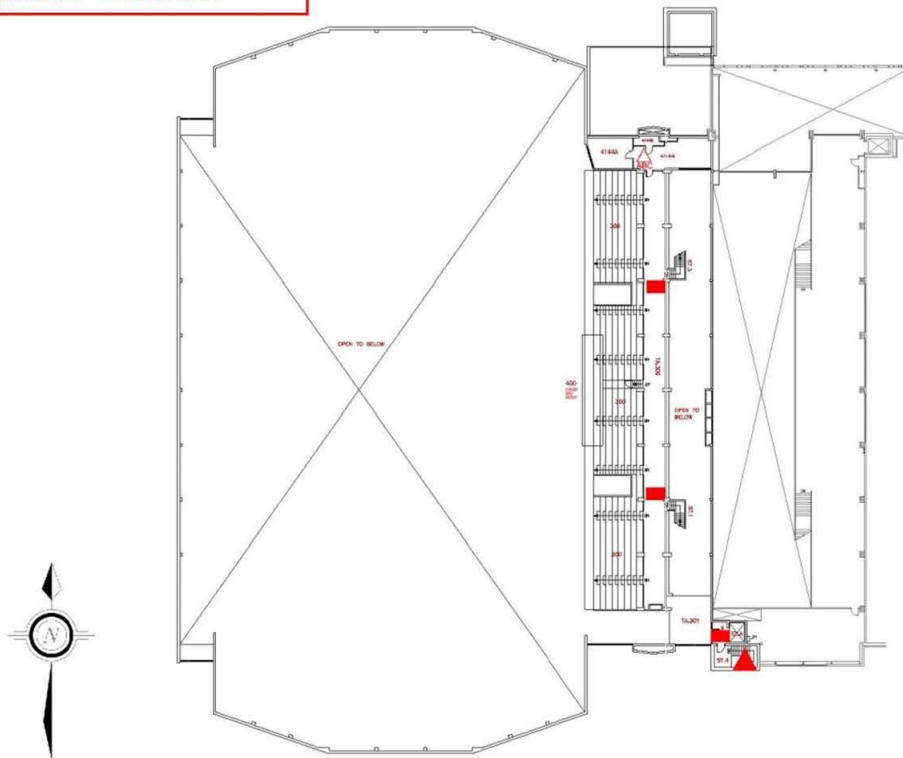


**Thompson Arena
Level 02 - First Floor/Bleachers**



- Pull Pin for Kitchen Fire Suppression System
- Entrance/Exit
- Fire Hydrant
- Valve
- Fire Alarm Control Panel
- Fire Alarm Annunciator
- Siamese
- Pull Station
- Fire Extinguisher - D Type
- Fire Extinguisher - ABC Type
- Fire Extinguisher - ABC Type Hose Cabinet

**Thompson Arena
Level 03 - Second floor**



- Pull Pin for Kitchen Fire Suppression System
- Entrance/Exit
- Fire Hydrant
- Valve
- Fire Alarm Control Panel
- Fire Alarm Annunciator
- Siamese
- Pull Station
- Fire Extinguisher - D Type
- Fire Extinguisher - ABC Type
- Fire Extinguisher - ABC Type Hose Cabinet