



Western
UNIVERSITY • CANADA

Welcome to Western Engineering!

Thank you for joining us!

To ensure the smooth delivery of this session, please ensure you are following the etiquette for Zoom Meetings listed below:

1. Mute your microphone
2. Keep your camera turned off for the duration of the Town Hall.
3. Hold all questions until the end! We will open the Chat feature to collect your questions at the start of the Question and Answer period.

Agenda

1. Faculty Graduate Office Team
2. Department & Program Contacts
3. Graduate Program Reminder
4. Graduate Student Life
5. Faculty of Engineering Career Services
6. Off-Campus Housing
7. Western Apartments
8. Question & Answer Session
9. Breakout Rooms by Department

Faculty Graduate Office Team

**Kamran Siddiqui, PhD,
PEng**
Associate Dean,
Graduate & Postdoctoral
Studies
SEB 2078

Brenda Sefeldas
Administrative Assistant
SEB 2079

Sarah Rooth
Graduate Affairs Assistant
SEB 2003B

Caitlin Oakley
Graduate Affairs Assistant
SEB 2003B

Department Contacts

Faculty Members

Biomedical Engineering

- Jim Lacefield, Director

Chemical & Biochemical Engineering

- Lars Rehmann, Associate Chair, Graduate
- Shahzad Barghi, Associate Chair, Graduate Professional Programs

Civil & Environmental Engineering

- Clare Robinson, Associate Chair, Graduate
- Ayman El Ansary, Associate Chair, Graduate

Electrical & Computer Engineering

- Xianbin Wang, Associate Chair, Graduate
- Abbas Samani, Assistant Chair, Graduate Professional Programs

Mechanical & Materials Engineering

- Liying Jiang, Associate Chair, Graduate
- Samuel Asokanthan, Associate Chair, Graduate Professional Programs

Thompson Center for Engineering Leadership and Innovation

- Hesham El Nagger, Director

Department Contacts

Program Coordinators

Biomedical Engineering, ACEB 2405

- Christine Ellwood (bmeoffice@uwo.ca)

Chemical and Biochemical Engineering, TEB 477

- Marina Omelchenko (cbegrad@uwo.ca)

Civil and Environmental Engineering, SEB 3005

- Emily Moyer (MEng)
(ceeprofessionalgrad@uwo.ca)
- TBD (Research)
(ceeresearchgrad@uwo.ca)

Electrical and Computer Engineering, TEB 279

- Lynda Ding (MEng) (ecegrad@uwo.ca)
- Courtney Harper (Research)
(ecegrad@uwo.ca)

Mechanical and Materials Engineering, SEB 3002

- Claire Naudi (MEng)
(mmeprofessionalgrad@uwo.ca)
- Joanna Blom (Research)
(mmeresearchgrad@uwo.ca)

Thompson Center for Engineering Leadership and Innovation ACEB 2410

- Modupe Ikenyei (Gdip) (tceli@uwo.ca)

General Admission Reminders

Transcript Submission:

You are required to provide one official academic transcript from each post-secondary institution you have attended. An official paper transcript is a transcript in an unopened envelope with the institution's stamp on the seal. If the transcript is not in English, an official translation must accompany the transcript.

Paper Transcripts

Must be mailed directly from the issuing institution to the School of Graduate and Postdoctoral Studies.

Mailing Address

Graduate Admissions
School of Graduate and
Postdoctoral Studies
International and Graduate Affairs
Building, Room 1N07
Western University
1151 Richmond Street
London, Ontario Canada N6A 3K7

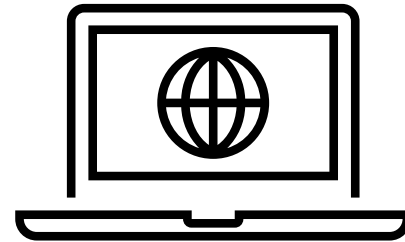
General Admission Reminders

Transcript Submission:

You are required to provide one official academic transcript from each post-secondary institution you have attended. If the transcript is not in English, an official translation must accompany the transcript.

Electronic Transcripts

Directly to the School of Graduate & Postdoctoral Studies (gradapps@uwo.ca) from the issuing Institution's Registrar's Office.



General Admission Reminders

Study Permit Submission

If you are an International Student, you will need to submit a copy of your study permit to the School of Graduate and Post-doctoral Studies to clear the Study Permit Admission Condition and activate your registration.

Electronic Submission

- A clean copy of your study permit can be emailed to cbell57@uwo.ca.

In-Person Submission:

- Directly to the School of Graduate & Postdoctoral Studies, International and Graduate Affairs Building, Room 1N07

Questions?

For questions regarding your Admissions Conditions, please consult your Offer of Admission and/or contact the School of Graduate and Postdoctoral Studies.

Email: gradapps@uwo.ca

Important Tuition Reminders

- **Tuition Deposit: June 15th (for MEng students)**
 - MEng students are required to pay \$500 tuition deposit **that will be credited towards their Fall term tuition** when they register.
- **Fall Term Tuition Deadline: September 11th**
 - If you need to pay the full amount of your tuition for the year for Visa purposes, please see the amounts listed by the Office of the Registrar at the bottom of this webpage: [SDS Letter Tuition Amounts](#)
 - You are also able to see payment details on your Statement of Account in [Student Center](#). ([Student Financials- Statement of Account- Select Term](#))

Tuition Payments: From a Canadian Bank

If you are paying from a Canadian Bank you can pay via:

- Internet Banking
- Cheque or Money Order

For instructions and further information, please see here.

Tuition Payments: International

If you are making an International Payment, Western uses Covera Global Pay (formerly Western Union Business Solutions).

For more information, including a Step-by-Step instructional video (offered in 11 languages), please see here: [International Payments - Office of the Registrar - Western University \(uwo.ca\)](#)

Payment Methods NOT Accepted

- The University of Western Ontario **does not accept** cash, Internet e-mail money transfers or credit cards for fee payments.
- **Any company or organization that offers the opportunity to pay fees by credit card is not associated with Western.** If you choose to use such a service, you should be aware that:
 - You will remain responsible for all fees should for any reason the fees payment not be processed;
 - You will be paying a fee to the company over and above Western's fees;
 - You will be required to provide personal information, including your student number, to the company.
- Western does not encourage the use of third party payment services.

Tuitions fees for all students at Western are set and controlled by the Office of the Registrar.

If you wish to view the current or previous Tuition Fees Schedules at Western, please visit:

https://www.registrar.uwo.ca/student_finances/fees_refunds/fee_refund_schedules.html

Note: Fall term tuition amounts are not posted yet

Some students may require a receipt of payment of Tuition fees

You can download a copy of your Statement of Account directly from the Student Center (Student Financials-Student Account)

Western Student Experience

Graduate Student Life

Graduate Student Life

Supporting Success in Graduate School

Graduate Student Life

- GradLife 101
- GradLife Coaching Appointments
- Drop-in Office Hours
- Campus Engagement
- Services & Resource Navigation

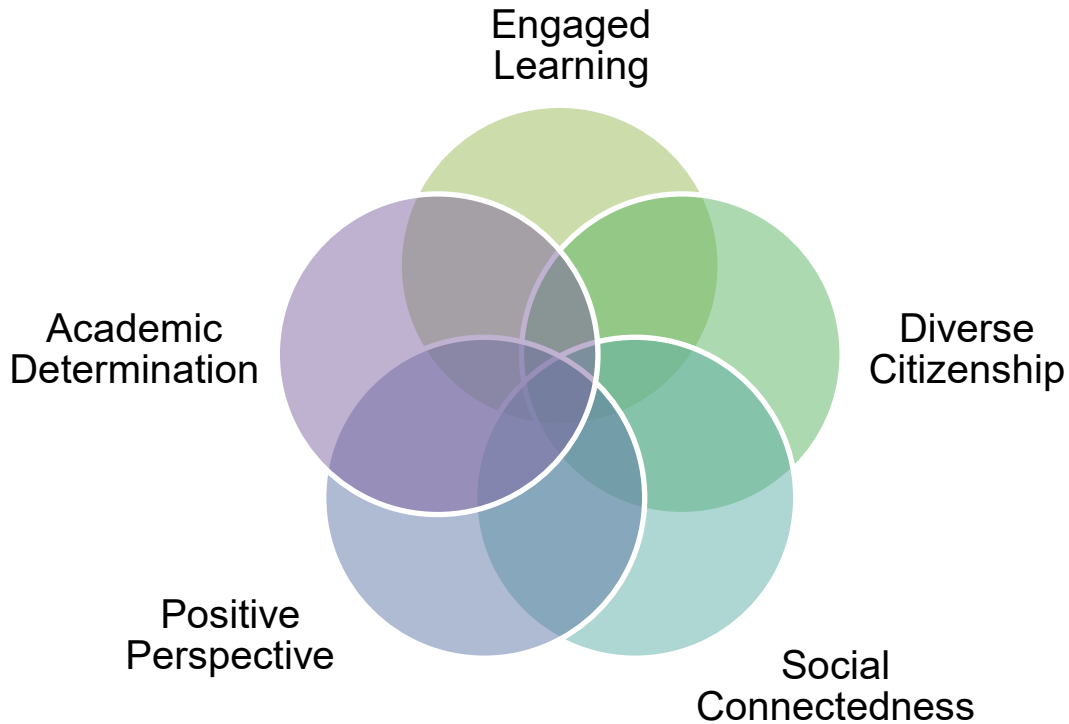


Dr. Jeremy Johnston
Program Specialist,
Graduate Student Life

gradlife@uwo.ca

Western  StudentExperience

Research on Student Thriving



**Leadership
& Learning**

**Sports &
Recreation**

**Wellness &
Wellbeing**

Leadership & Learning

Accessible Education

Career Education

Employer Relations

Experiential Learning

Learning Development & Success

Transitions, Leadership & Enrichment

Writing Support Centre



Sports & Recreation

Spirit & Connection

Sport

Recreation



Wellness & Wellbeing

Mental Health

Student Health & Wellness Services

Student Support & Case Management

Vaccination & Testing Centre

Wellness & Equity Education





Western Engineering's Career Services Team!

Meet Western Engineering's Career Services Team!



Samantha Roach, Ph.D.

Director, Engineering
Experiential Learning and
Student Support



Sarah Innes

Manager,
Experiential Learning



Stacy Dinell

Administrative Assistant

Olivia Kuijpers

Career Services Officer,
Student Specialist
(Undergraduate)



Daniela Lopez

Career Services Officer,
Student Specialist
(Graduate)



Vinicius (Vince) Reis

Career Services Officer,
Student Specialist
(Undergraduate)

Teresa Boere

Career Services Officer,
Student Specialist



Khandeeban Kumarasamy

Employer Relations
Specialist



Kyle Reid

Employer Relations
Specialist



What We Do:

- The Career Services Team supports the Faculty of Engineering in its goal of providing the best student experience through career preparation assistance and job search efforts, to help students make informed decisions about their career paths and through experiential learning opportunities.

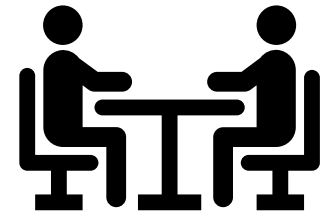
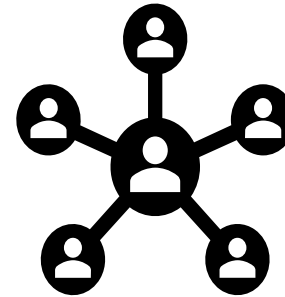
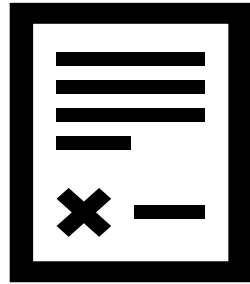
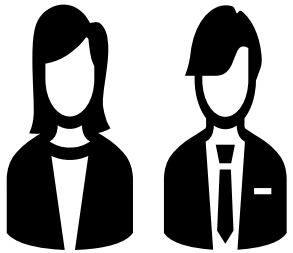


- We are here to assist in your career journey while here at Western and beyond!



What Does Western Engineering's Career Services Offer?

• Career Preparation:



- Mock Interviews

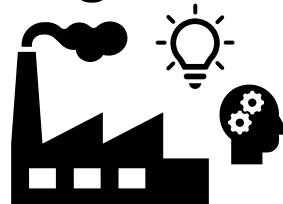
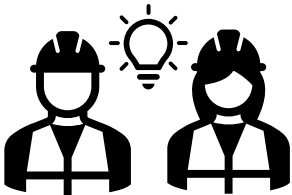
- Resume & Cover Letter Workshops

- Job Search Strategies

- Networking Strategies

- One-to-one virtual or in-person meetings

• Experiential Learning:



- Co-op

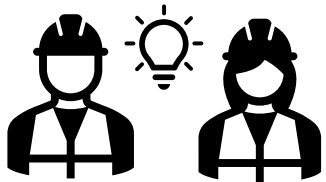
- Industry Focused Project

- Community Engaged Learning

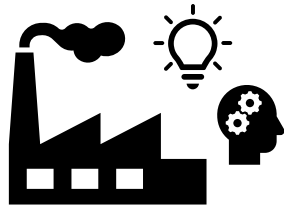
- International Opportunities

Benefits of Experiential Learning

- Helps students to apply their knowledge and skills in a real-world context, and to learn from their experiences in a way that deepens their understanding and builds their confidence and competence.
- Many benefits include the development of critical thinking, problem-solving, and communication skills. Experiential learning can also help students to build their professional networks, gain valuable work experience, and increase their chances of success in their chosen careers.



• Co-op



• Industry Focused Project



• Community Engaged Learning



• Research Projects

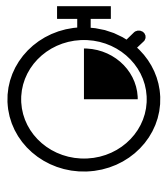


• International Opportunities

What Co-op Programs are Available to MEng Students?

Students registered in the **Master of Engineering (MEng) with Co-op Option will complete their program in 4 terms.**

What is the length of the MEng Co-op Program?



- Length is 4 months (minimum 12 weeks)



- Fall Term - Position to start at the beginning of September and finish at the end of December

Prior to undertaking a co-op, students must first fulfill the requirement of completing the three terms in the regular Master of Engineering program.

What Co-op Programs are Available to MEng Students?

For students in the combined **Master of Engineering (MEng) – Graduate Diploma (GDip; Engineering Leadership and Innovation)** program, who opt-in to the co-op option, will complete their program in 5 terms.

What is the length of the MEng + GDIP Co-op Program?

Option 1



Length is 4 months



Winter Term
Position to start at the beginning of January and finish at the end of April

Option 2

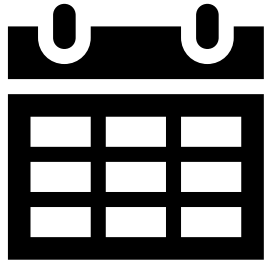


Length is 8 months.

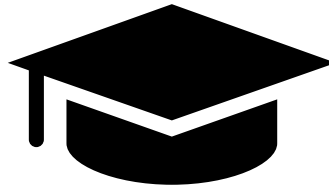


Winter Term
Position to start at the beginning of January and finish at the end of August

What are the eligibility requirements of the MEng Co-op Program?



Students must have started the MEng program in the **Fall term** and are registered as full-time students.

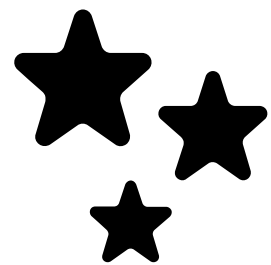


Students need to be in good academic standing and maintain a cumulative average of 75% or higher calculated **in the term prior to starting co-op**.



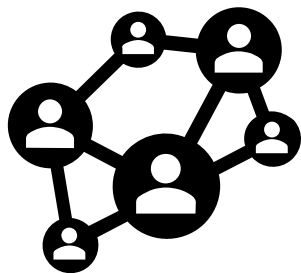
International students **must** apply for a Co-op Work Permit and ensure that it covers the full co-op term, otherwise, apply for an extension.

What are the benefits of participating in the MEng Co-op Program?



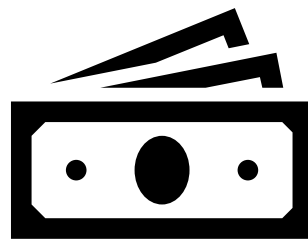
Experience

Gain practical, hands-on, industry-relevant experience through experiential learning within the workplace.



Networking

Build a professional network with employers and colleagues within the field.



Earn an Income

All co-op opportunities must be paid (more than minimum wage)



Canadian Work Environment

Develop an understanding of cultural aspects of Canadian work environments



Skills

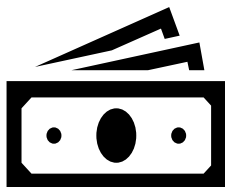
Gain interviewing and resume-building skills.



Milestone

Students who successfully complete 4 months of co-op will receive a Program Milestone in their academic record

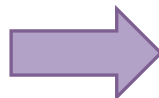
How Do Students Apply?



Step 1:

Students are required to **pay an application fee of \$125.**

Students are to submit their Application Fee Payment through our Engineering Ecommerce Site. Students may pay by Visa, MasterCard, or Debit Visa.



Step 2:

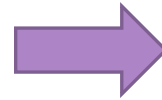
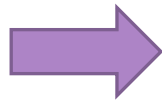
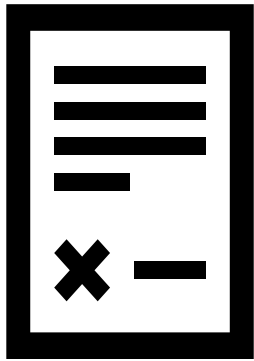
Students are required to **submit an application through Western Connect**. Steps of how to apply through Western Connect are available on our Western Engineering Career Services Website.

**WE ENCOURAGE YOU TO
APPLY BY SEPT 30!**

How to Get a Co-op Work Permit?

International students are required to **secure an approved co-op work permit prior to beginning their co-op.**

Upon submitting an application, Western Engineering's Career Services team will email international students detailing next steps as they relate to co-op work permits.



- Complete and Sign the Acknowledgement Letter

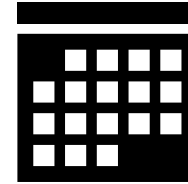
- Receive a Work Permit Letter from our office

- Submit an online application for a co-op work permit (Government of Canada Website)

Resources

Western Connect

- Job boards and careers related events registration

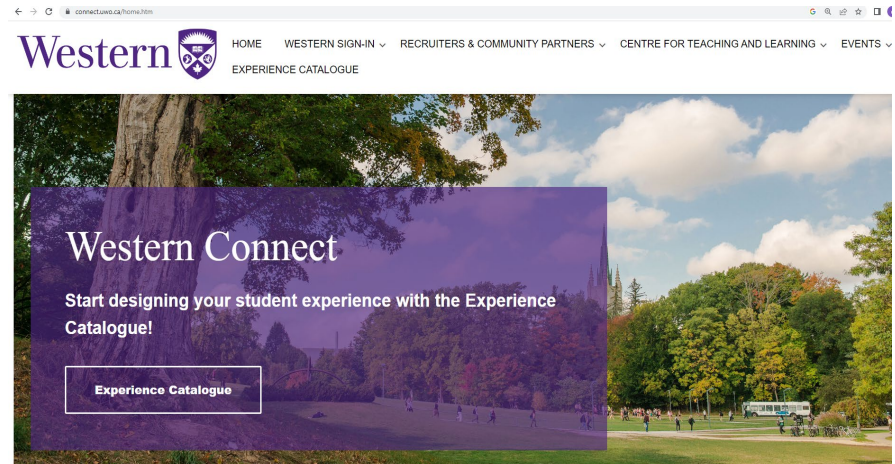


Employer Events

- Attend the many employer events offered throughout the year, both in-person and in virtual settings.

Signature events:

- Fall term
 - Industry Nights, Networking Events, Scholarships, Career Workshops, Career Fair.
- Winter term
 - Employer Panels, Industry Nights, Career Workshops, Job fair.



<https://connect.uwo.ca/home.htm>

Resources

Weekly career services email

- Sent out every Monday!
- Information on upcoming employer events, career workshops, special notifications.



wecareer@uwo.ca

Let's Connect!

Western Engineering Career Services



Location

Spencer Engineering Building,
Room 2092

Monday – Friday 8:30am to 4:30pm

Telephone

+1 (519) 661-2111 ext. 88359

Email

wecareer@uwo.ca

Website

<https://www.eng.uwo.ca/coop/index.html>

Western's Off-Campus Housing Service

- Off-Campus Housing Listings
- Housing Mediation Service
- Off-Campus Advisor Program

OFF-CAMPUS HOUSING SERVICE

- Listing Service: 2,000 landlords with over 5,000 listings annually
- #1 site where students find their housing
- Students can post free ads if looking for roommates or sub-tenants

OFF-CAMPUS HOUSING SERVICE

- Off-Campus Housing Assistant
 - Helps International & out-of-province students verify housing
 - Reports on whether property exists to avoid internet scams
 - Reports on bus routes, grocery stores, schools/child care, religious options, etc.

OFF-CAMPUS HOUSING SERVICE

- Housing Mediation Service
 - Mediation Officer & OCH Coordinator
 - Rental advice
 - Lease review
- Off-Campus Advisors
 - help with questions after hours and on weekends during academic year

OFF-CAMPUS HOUSING SERVICE

- **Website:** [Offcampus.uwo.ca](https://offcampus.uwo.ca)
- **Rental Listings:**
<https://offcampus.uwo.ca/listings/>
- **Tenant rights and lease review:**
<https://offcampus.uwo.ca/appointment.cfm>
- **International & out-of-province student rental search support:** ocha@housing.uwo.ca

Western Apartments



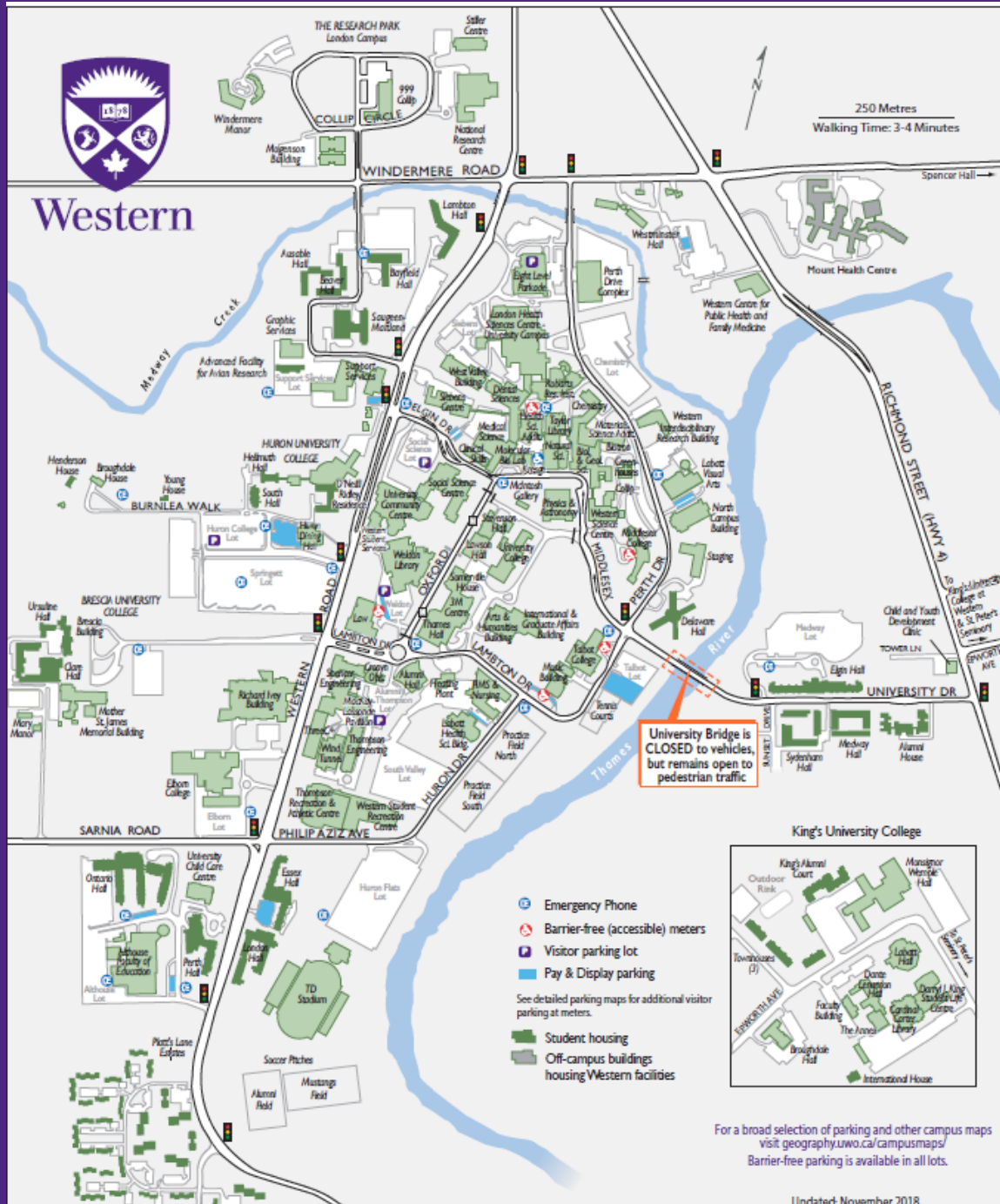
Will Uhl

AD Client Services

Housing & Ancillary



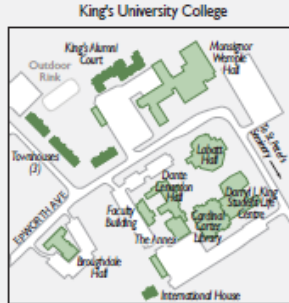
Western



250 Metres
Walking Time: 3-4 Minutes

University Bridge is CLOSED to vehicles, but remains open to pedestrian traffic

- Emergency Phone
 - Barrier-free (accessible) meters
 - Visitor parking lot
 - Pay & Display parking
- See detailed parking maps for additional visitor parking at meters.
- Student housing
 - Off-campus buildings housing Western facilities

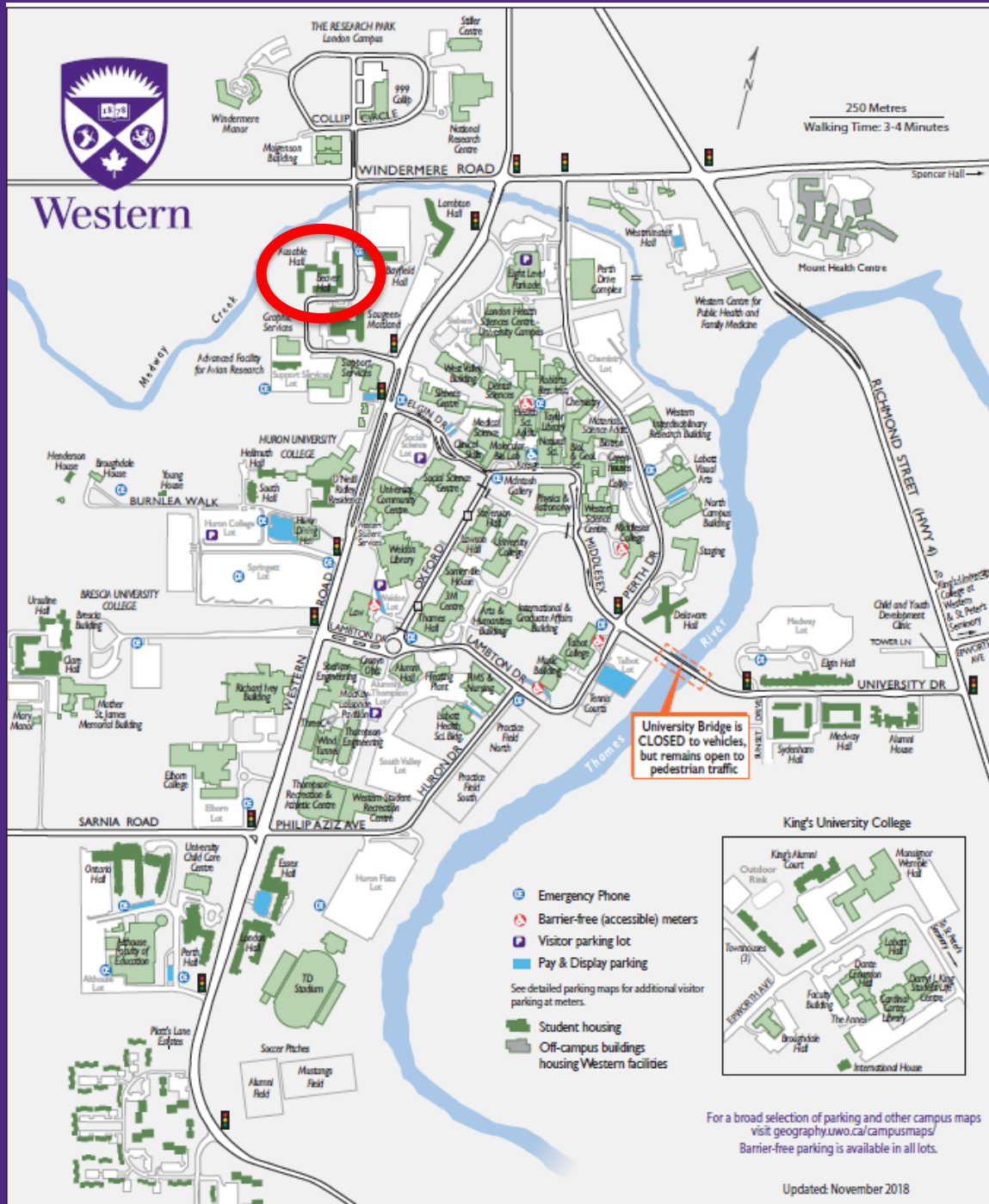


For a broad selection of parking and other campus maps visit geography.uwo.ca/campusmaps/
Barrier-free parking is available in all lots.

Updated: November 2018

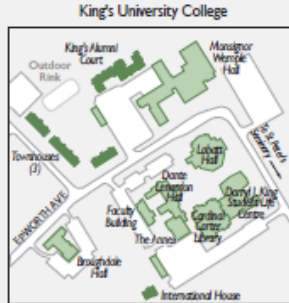


Western



University Bridge is CLOSED to vehicles, but remains open to pedestrian traffic

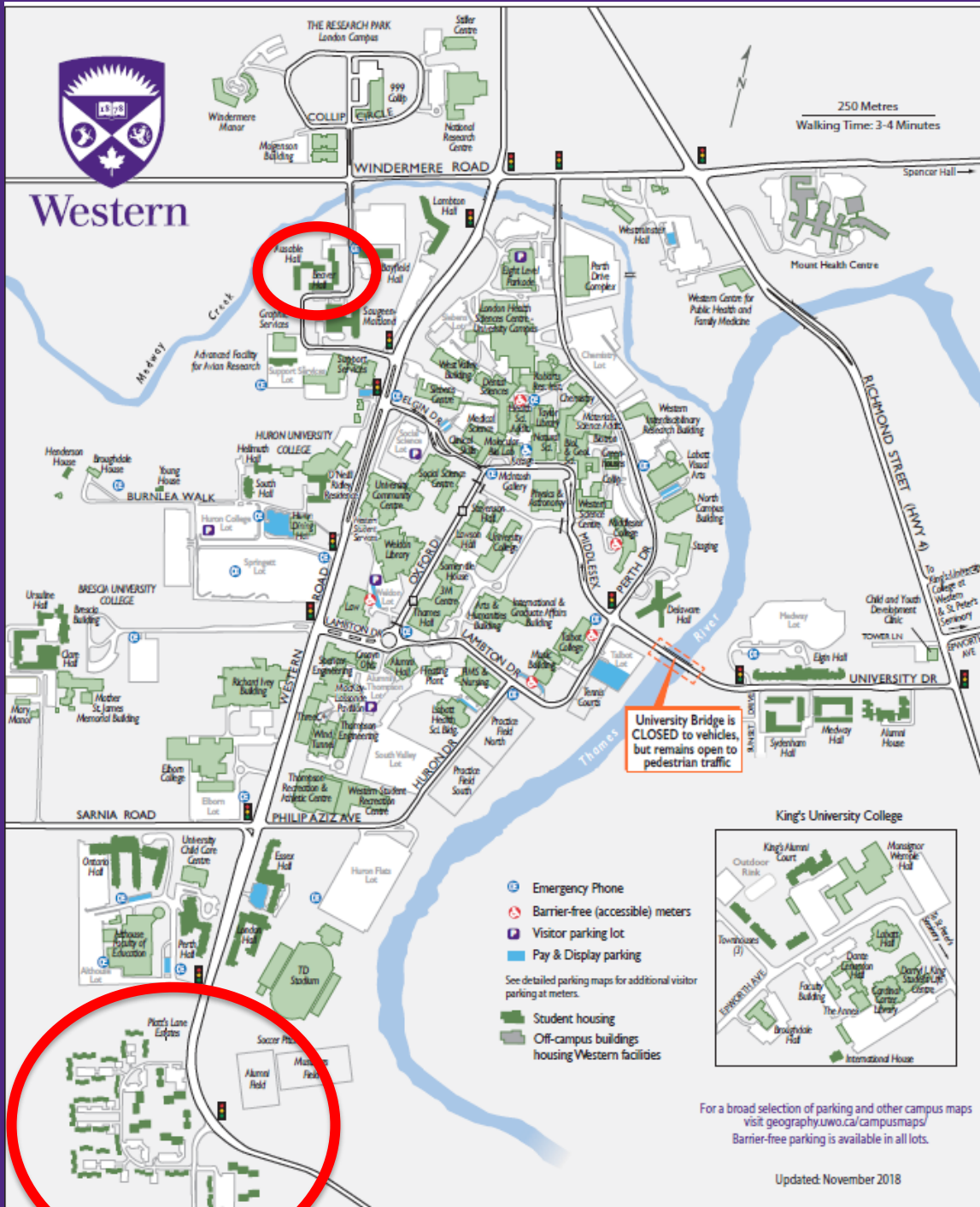
- Emergency Phone
 - Barrier-free (accessible) meters
 - Visitor parking lot
 - Pay & Display parking
- See detailed parking maps for additional visitor parking at meters.
- Student housing
 - Off-campus buildings housing Western facilities



For a broad selection of parking and other campus maps visit geography.uwo.ca/campusmaps/ Barrier-free parking is available in all lots.



Western



University Bridge is CLOSED to vehicles, but remains open to pedestrian traffic

- Emergency Phone
- Barrier-free (accessible) meters
- Visitor parking lot
- Pay & Display parking
- See detailed parking maps for additional visitor parking at meters.
- Student housing
- Off-campus buildings housing Western facilities

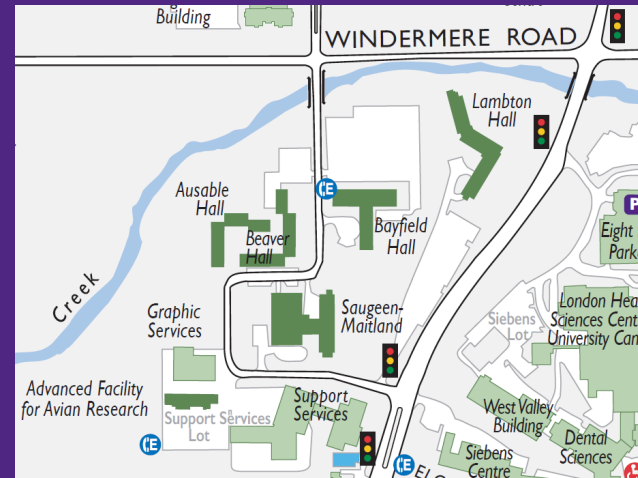
King's University College



For a broad selection of parking and other campus maps visit geography.uwo.ca/campusmaps/ Barrier-free parking is available in all lots.

University Apartments

- Beaver/Ausable Hall, 2nd year and older,
 - Two-bedroom units
 - 99 units



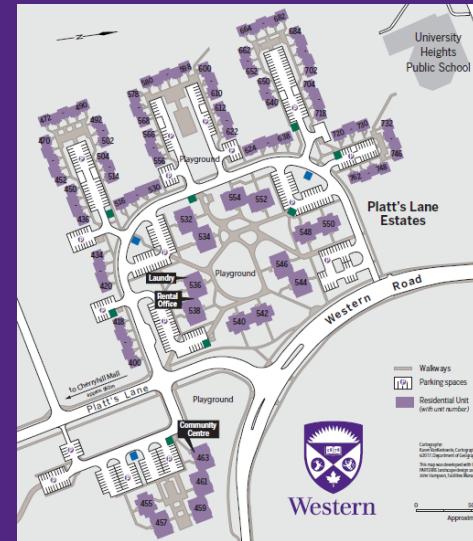
Beaver / Ausable Units



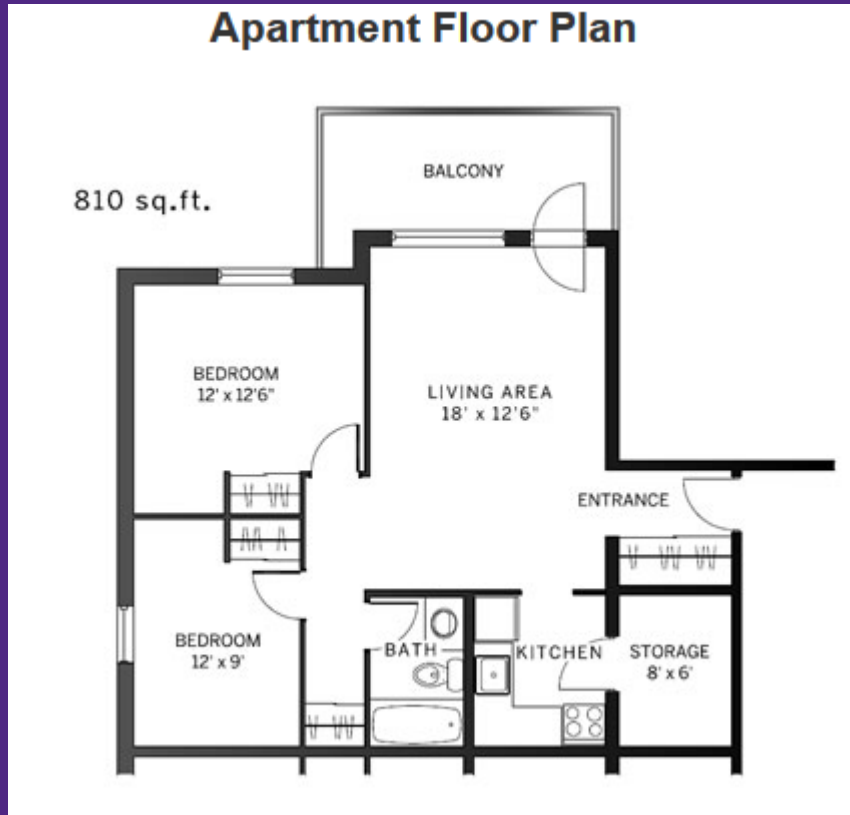
- Two-bedroom units
- Utilities included
 - No air conditioning
- Internet additional
 - \$1350 / month

Platt's Lane Estates

- Platt's Lane Estates, 2nd Year and Older
 - One and two-bedroom apartments – 204 units
 - Two and three-bedroom townhouses – 170 units



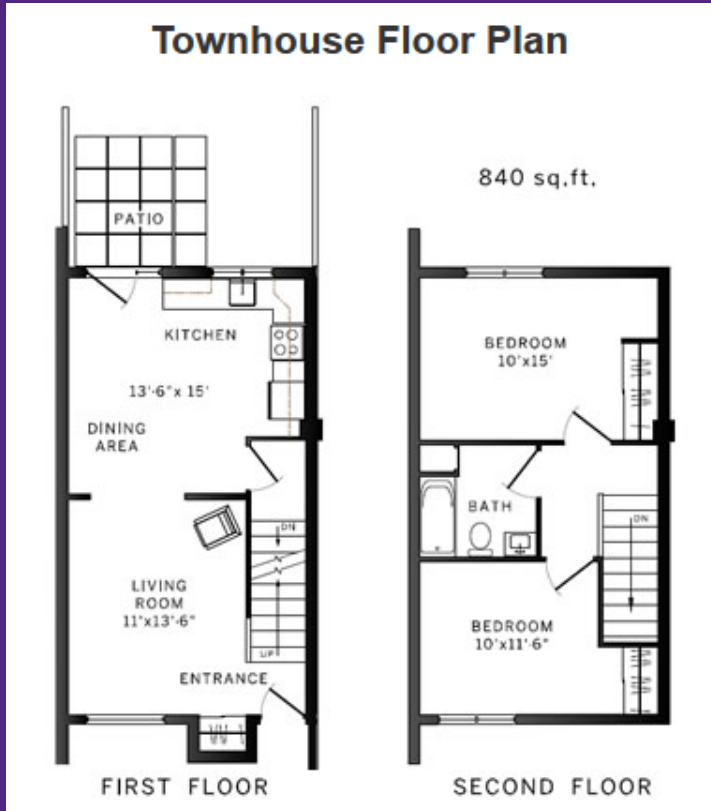
Platt's Lane Apartments



Apartment Unit

- One and Two-bedroom units
- Utilities included
 - No air conditioning
- Internet additional
- One BR
\$1170/month
- Two BR
\$1350/month

Platt's Lane Townhouses



Townhouse Unit

- Two and Three bedroom units
- Utilities additional
 - No air conditioning
- Internet additional
- Two BR
\$1380/month
- Three BR
\$1560/month

Western Apartments Websites:

<https://apartments.uwo.ca/>
<https://plattslane.uwo.ca/>

- Application instructions
- Virtual tours
- Tenant information
- Rental office contact

University Apartments

Western

Home Facilities Community Renting Resources Rental Office

Clean, Convenient and Affordable
for mature students, the best housing alternative is provided right on campus!
Check out How to Apply

APARTMENT LAYOUTS & PHOTOS
Interior Photos
Apartment Layouts

UPCOMING EVENTS
Find us on Facebook

PLATT'S LANE ESTATES
Platt's Lane Estates offers conveniently located, affordable accommodations to Western's upper-year, graduate, and students with families.
Check out our Platt's Lane Estates website

University Apartments
Upper-Year & Graduate Student Accommodations

At Western, we understand that upper-year and graduate students need to make the most from their academic & Western experience. The campus life experience is one of the greatest benefits of living at University Apartments.

Living on-campus at the University Apartments Complex provides you with convenient access to your classes, your professors, and Western's many campus resources. It also offers many opportunities to enrich your time outside of the classroom. You can easily maintain your independence while staying connected to campus life. You will effortlessly meet fellow students and build relationships participating in our interesting and stress-relieving community activities.

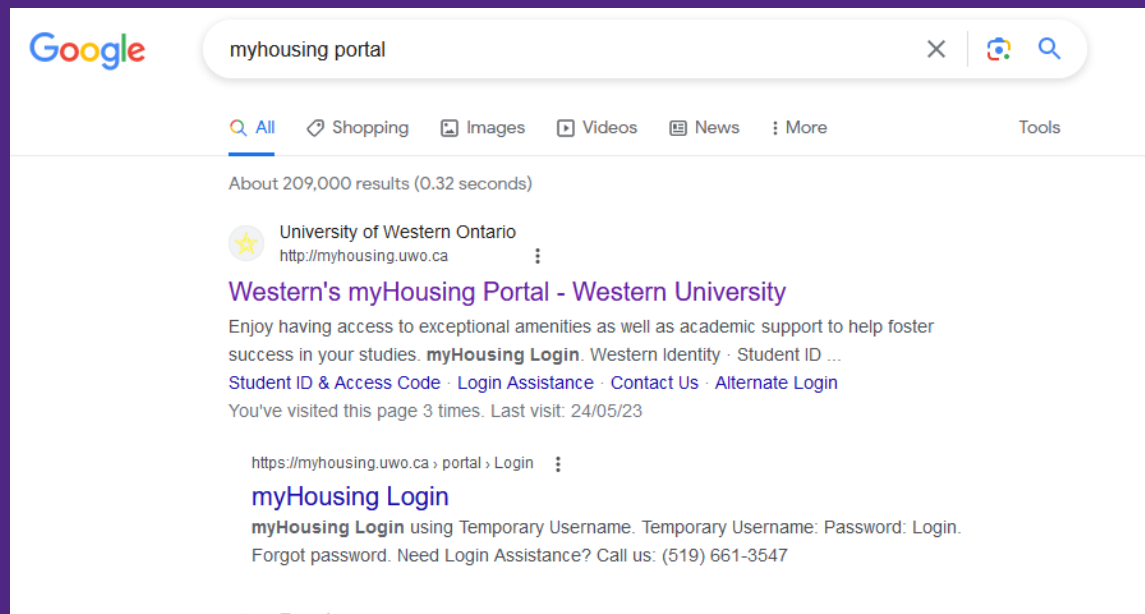
Our University Apartments consist of 99 2-bedroom units in Beaver & Ausable Halls.

Our facilities are clean, convenient, comfortable and affordable because we understand your needs not just as a tenant, but as a student. Be part of campus living!

View Western Apartments Handbook PDF
Download a PDF copy of our guide to student life at University Apartments and Platt's Lane Estates. Learn more about the following important information:

Application Process

Western's My housing portal <http://myhousing.uwo.ca>



The screenshot shows a Google search interface with the query "myhousing portal". The search results indicate approximately 209,000 results found in 0.32 seconds. The top result is from the University of Western Ontario, with the URL <http://myhousing.uwo.ca>. The result title is "Western's myHousing Portal - Western University". The description states: "Enjoy having access to exceptional amenities as well as academic support to help foster success in your studies. **myHousing Login**. Western Identity · Student ID ... Student ID & Access Code · Login Assistance · Contact Us · Alternate Login". It also notes that the user has visited this page 3 times, with the last visit on 24/05/23. Below the main result, there is a breadcrumb trail: <https://myhousing.uwo.ca> > portal > Login, followed by the heading "myHousing Login" and a sub-description: "myHousing Login using Temporary Username. Temporary Username: Password: Login. Forgot password. Need Login Assistance? Call us: (519) 661-3547".



Welcome to Western's myHousing Portal

Whether you're coming to Western for the very first time, or are continuing to study — we have accommodations to suit every lifestyle right on campus! Enjoy having access to exceptional amenities as well as academic support to help foster success in your studies.

myHousing Login

WESTERN IDENTITY

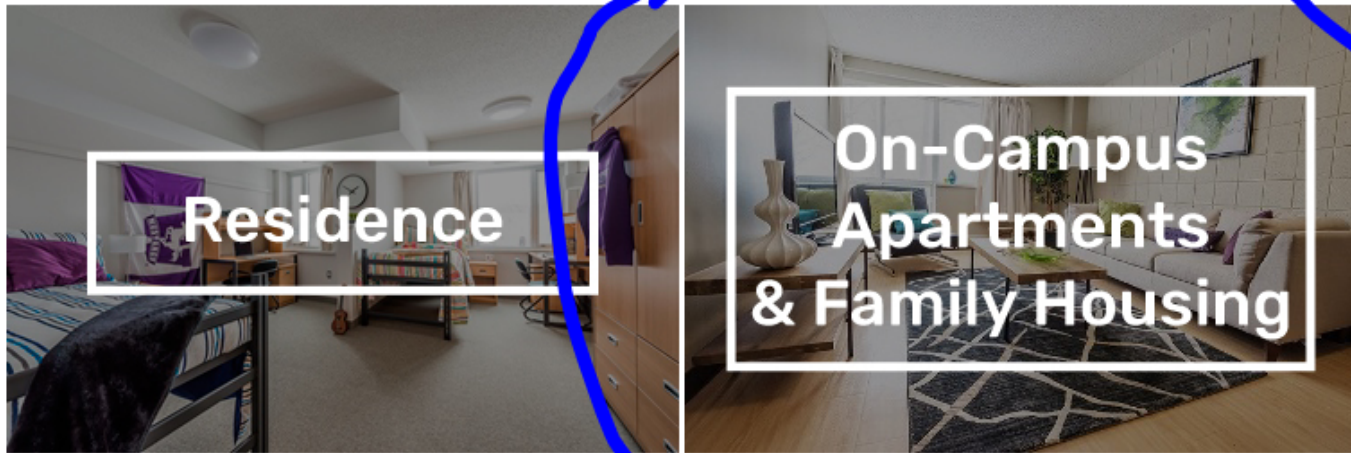
STUDENT ID & ACCESS CODE

TEMPORARY MYHOUSING USERNAME

Need [Login Assistance?](#)

Welcome to Western's myHousing Portal

Whether you're coming to Western for the very first time, or are continuing to study — we have accommodations to suit every lifestyle right on campus! Enjoy having access to exceptional amenities as well as academic support to help foster success in your studies.



Land Acknowledgement

We acknowledge that Western University is located on the traditional lands of the Anishinaabek (Ah-nish-in-a-bek), Haudenosaunee (Ho-den-no-show-nee), Lunaapéewak (Len-ahpay-wuk) and Chonnonton (Chun-ongk-ton) Nations, on lands connected with the London Township and Sombra Treaties of 1796 and the Dish with One Spoon Covenant Wampum.

With this, we respect the longstanding relationships that Indigenous Nations have to this land, as they are the original caretakers. We acknowledge historical and ongoing injustices that Indigenous Peoples (First Nations, Métis and Inuit) endure in Canada, and we accept responsibility as a public institution to contribute toward revealing and correcting miseducation as well as renewing respectful relationships with Indigenous communities through our teaching, research and community service.

On-Campus Apartments & Family Housing

On-Campus Apartments

Thank you for your interest in On-campus Apartments & Townhouses. Complete your rental application for:

- **University Apartments:** Upper-Year & Graduate Accommodations
 - Ausable Hall
 - Bayfield Hall
 - Beaver Hall
- **Platt's Lane Estates:** Upper-Year, Graduate, Post Doctoral, Faculty & Family Accommodations

[APPLY](#)

[Personal Details](#)[Academic
Information](#)[Additional Tenants
& Occupants](#)[Lease Start
Preferences](#)[Accommodation
Preferences: Platt's
Lane Estates](#)[Considerations for
Accommodation](#)[Submit](#)[Confirmation](#)

Additional Tenants & Occupants

Additional Tenants

- A *tenant* is a person who is joint and severally liable for paying rent in return for the right to occupy a rental unit.
 - (i.e. Both leaseholders are financially responsible for any and all rental fees.)
- All tenants are listed on the lease and **must** be full-time Western students.
- There is a limit of two tenants listed on a lease.

Will another tenant be listed on the lease?

Additional Occupants

- An *occupant* is a person who is not a tenant but who lives in a rental unit as their principal place of residence.
- Occupants are not listed on the lease.

Will any additional occupants listed below live in the rental unit?

Personal Details

Academic
InformationAdditional Tenants
& OccupantsLease Start
PreferencesAccommodation
PreferencesConsiderations for
Accommodation

Submit

Confirmation



Lease Start Preferences

When would you want to start your lease? Please rank your preferred Lease Start Date(s) (*minimum 1*).

Note: All leases begin on the 1st of the month.

[CLICK HERE TO ADD PREFERENCES](#)

Order

Preference

Delete

1

2023/09 September 1, 2023

REMOVE

2

2023/08 August 1, 2023

OK

CANCEL

You can add 1 more preferences for this application.

Please select at least 1 preferences.

[SAVE & CONTINUE](#)

Personal Details

Academic
InformationAdditional Tenants
& OccupantsLease Start
PreferencesAccommodation
PreferencesConsiderations for
Accommodation

Submit

Confirmation



Confirmation

Thank you Will for your application to Western's On-Campus Apartments!

You will be notified via email if one of your preferred unit types is available for the dates you have selected. Please note that apartment applications sometimes exceeds availability, and, apartments may be offered in an order different than they were received. Only applicants offered an apartment will receive communication from us.

Visit myhousing.uwo.ca/portal to make changes to your application at any time; however, if you have any questions or concerns regarding your application, feel welcome to contact us.

Regards,

Western Apartments

Contact Information

Platt's Lane Estates Rental Office

plattslane.uwo.ca

(519) 679-4561

western.apartments@uwo.ca

University Apartments Rental Office

Application Process

- Lottery system
 - Based on lease start dates and unit types
 - Many more applicants than spaces
- Competitive market - recommend search on and off campus

How to Contact Rental Office?

- Bayfield Rental Office:
 - 519-661-3250
 - <https://apartments.uwo.ca/>
- Platt's Lane Rental Office:
 - 519-679-4561
 - <https://plattslane.uwo.ca/>
- Email:
 - Western.apartments@uwo.ca

General Questions?

- Use the "Chat" feature in Zoom to send in your general questions.
- Following this Q&A session, you will be moved to your department-specific breakout room for department-specific inquiries.

Upcoming Town Hall Session

July 20 (9:00am - 11:00am EST)

Topics:

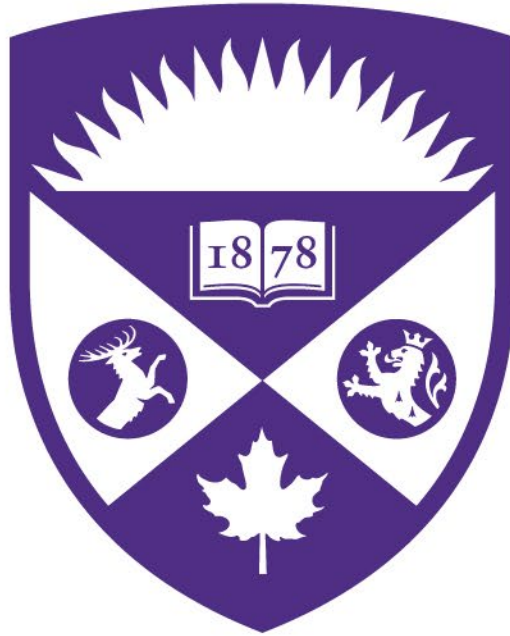
- Arriving at Western
- Settling into London
- Course Registration

Questions? Email Us!

weadmit@uwo.ca



[Register Here](#)



Western
UNIVERSITY • CANADA